

**Guidebook for MIND Users**

**Wireless LAN Connection Service**

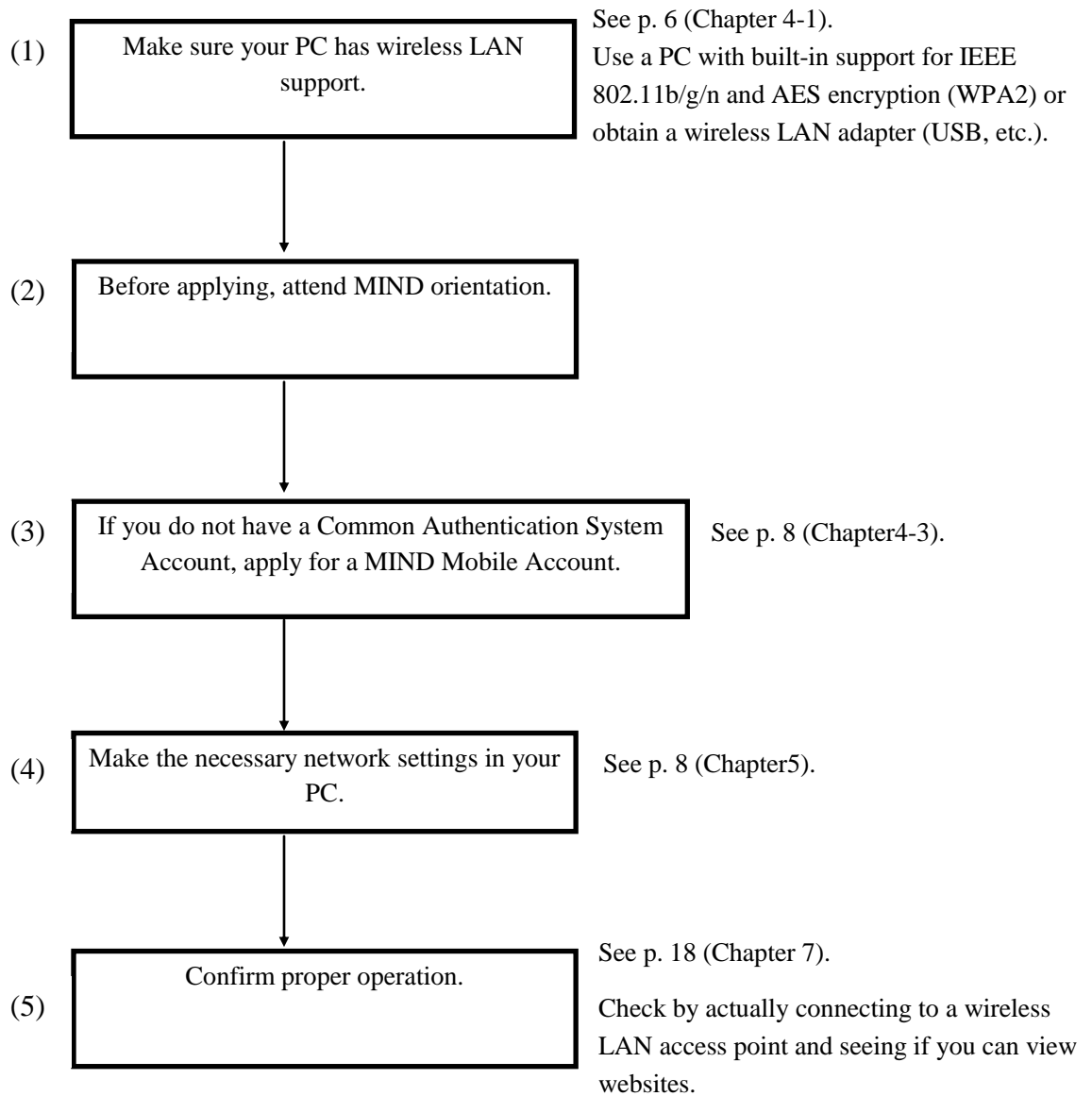
**(Windows 8.1 [Desktop Mode] Edition)**

March 31, 2014

Network Promotion Division  
IT Systems & Infrastructure Headquarters

# Procedures for Using Wireless LAN Connection Service

This Guidebook explains how to use the wireless LAN service available on each campus. The procedures are outlined below; see the indicated pages for a more detailed description.

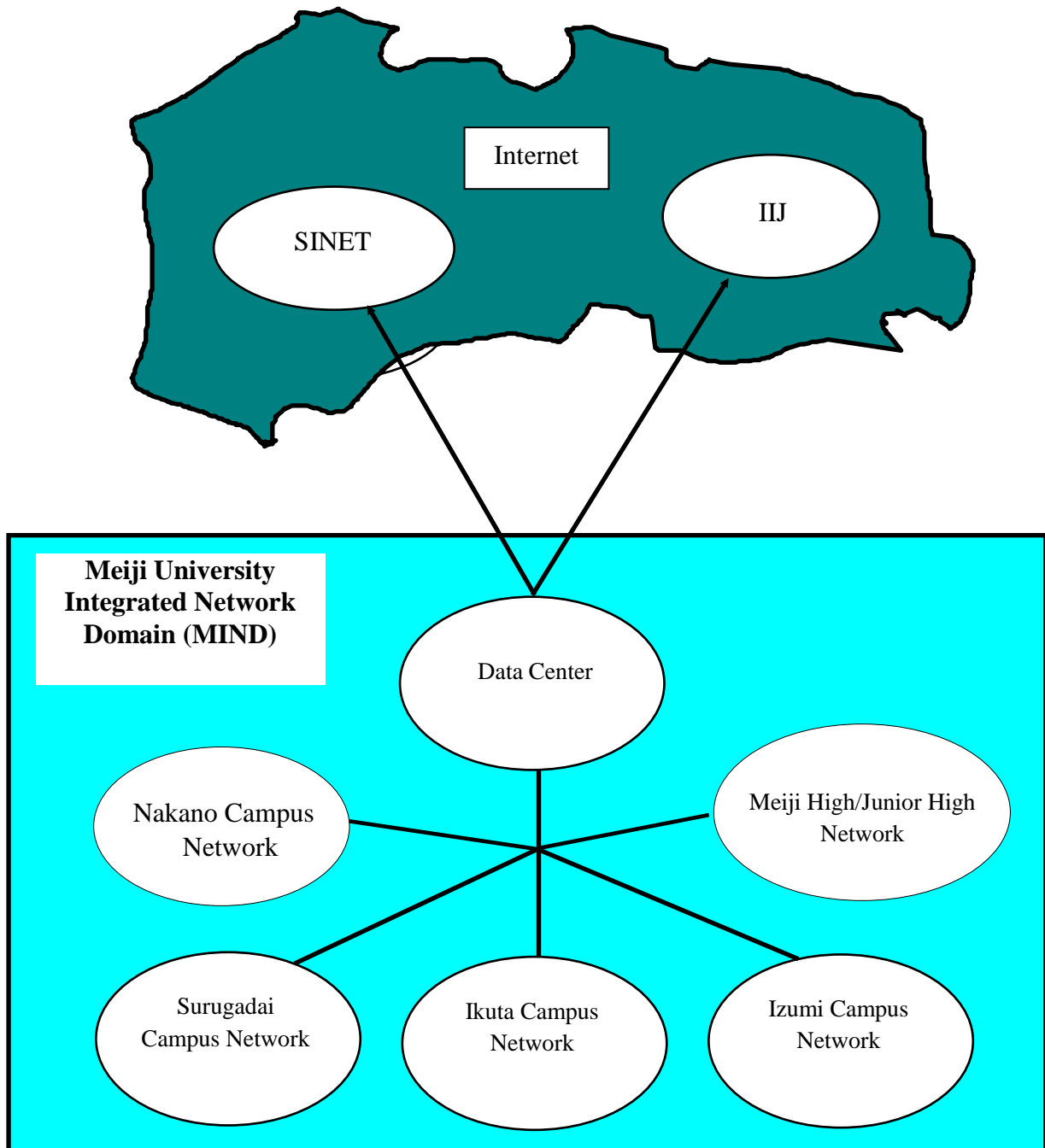


# Contents

<b>1. What Is MIND?</b> .....	<b>4</b>
<b>2. Connections to MIND</b> .....	<b>5</b>
<b>3. What Is Wireless LAN Connection Service?</b> .....	<b>6</b>
<b>4. Before Using Wireless LAN Connection Service</b> .....	<b>6</b>
4.1. Required Equipment.....	6
4.2. Wireless LAN Access Point Locations .....	7
4.3. Accounts for Using Wireless LAN Connection Service .....	8
<b>5. Network Setup</b> .....	<b>8</b>
5.1. Connecting to an Access Point.....	8
5.2. TCP/IP Setup.....	12
<b>6. Web Browser Settings</b> .....	<b>14</b>
6.1. Internet Explorer 11.x .....	14
6.2. Mozilla Firefox 3.x.....	16
<b>7. Viewing Websites</b> .....	<b>18</b>
<b>8. Troubleshooting</b> .....	<b>21</b>
<b>9. Where to Inquire about Network Connections and Trouble</b> .....	<b>22</b>
<b>10. Reference URLs</b> .....	<b>23</b>

## 1. What Is MIND?

MIND (Meiji University Integrated Network Domain) is the general name for the networks in Meiji University. MIND connects to the science information network SINET operated by the National Institute of Informatics (NII) and to the commercial Internet service provider IJ, as part of the overall Internet (Fig. 1). It can therefore be used for sending e-mail to people all over the world and for viewing Internet websites.



**Fig. 1. Relation of MIND to SINET, IJ, and the Internet**

## 2. Connections to MIND

You will need to apply for use before you can connect a computer to MIND for accessing network services. The application procedures are of the following two kinds, depending on how you will be connecting a computer to MIND.

1. Procedure when using a computer located in a research office, laboratory, etc.

→ The person responsible for connection submits a MIND User Application to the IT Systems & Infrastructure Headquarters.

2. Procedure when using MIND Mobile Connection Services

(1) Mobile Information Outlet Connection Service

A service used for temporarily connecting to the network from a mobile information outlet installed on each campus.

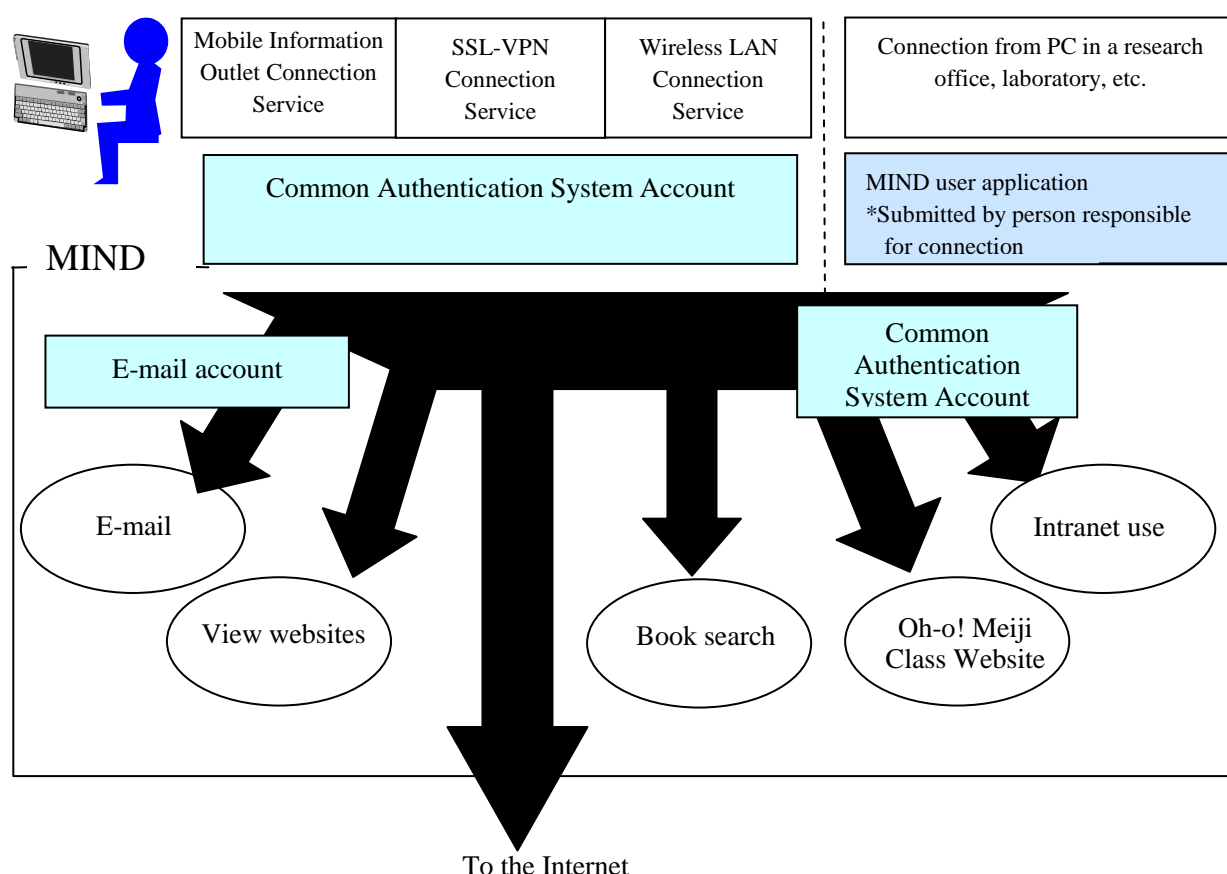
(2) SSL-VPN Connection Service

A service for temporarily connecting to the university network from home, overseas, or other off-campus location using the Internet.

(3) Wireless LAN Connection Service

→ The individual user connects with a Common Authentication System Account.

(Those without such an account will need to apply for a MIND Mobile Account.)



**Fig. 2. Types of MIND Connections and Available Services**

\* After connecting to MIND, you will be able to make use of the e-mail service provided by the IT Systems & Infrastructure Headquarters, the book search service provided by the university libraries, and other services.

### 3. What Is Wireless LAN Connection Service?

Wireless LAN Connection Service lets you temporarily connect a notebook PC or other terminal to the university network (MIND) by wireless link.

By taking advantage of this connection service, you can use your own PC to access a WWW server and view websites, to send and receive e-mail, to use online library services, or to make use of other services provided by MIND, the IT Systems & Infrastructure Headquarters, the university libraries, and others.

This Guidebook describes the procedure for connecting a PC to the wireless LAN on a campus and notes precautions in use.

## 4. Before Using Wireless LAN Connection Service

### 4.1. Required Equipment

The wireless LAN specifications are as follows.

Wireless LAN standards	IEEE 802.11b/g (max. 54Mbps) IEEE 802.11n (max. 300Mbps)
Wireless LAN frequency bands	IEEE 802.11b/g: 2.4GHz band IEEE 802.11n: 5GHz band
Encryption	WPA2-PSK (AES)
SSID (service set identifier) and cipher key	<a href="http://www.meiji.ac.jp/mind/wireless/local/">http://www.meiji.ac.jp/mind/wireless/local/</a>
Authentication method	Web authentication (must be performed the first time the web browser is launched)
Authentication account	Common Authentication System Account (faculty and students) or MIND Mobile Account (research promoters, visiting fellows, etc.)

If your PC comes with a built-in wireless LAN function conforming to the above specifications, it can be used as is. If such a function is not built in, you will need to purchase a wireless LAN card or adapter.

Note: This Guidebook is written mainly assuming use of Windows 8.1 (Desktop Mode) and either Internet Explorer 11.x or Mozilla Firefox 21.x as browser. If you need help with another OS or web browser, contact the support desk on your campus (see p. 22).

## 4.2. Wireless LAN Access Point Locations

Wireless LAN access points are installed in the following locations (as of April 1, 2010).

See the following page for details of the locations.

<http://www.meiji.ac.jp/mind/wireless/index.html>

### Surugadai Campus

- Liberty Tower
  - Central Library basement lounge, readings rooms in basement and on 1st floor
  - 1st floor Lounge Marronnier, Kosei Matsui Hall, Liberty Hall
  - 2nd floor lobby (in front of vending machines), 3rd floor faculty lounge, 7th floor support desk
- Academy Common
  - 2nd floor A1 conference room, Academy Hall on 3rd to 5th floors
  - Fellowship salons on 7th to 10th floors, 10th floor faculty lounge
- Faculty Office Building
  - 4th floor faculty lounge, conference room 3
- Building No. 12
  - 1st floor hall, 4th floor faculty lounge, 7th floor support desk

### Izumi Campus

- Building No. 1
  - 1st floor lounge, 6th floor conference room 1
- Media Building
  - 1st floor lounge, support desk, faculty lounge
  - 2nd floor study halls (M203,M204), 4th floor lounges (east and west sides), 5th floor lounge
- Gymnasium
  - Gymnasium WEST 2nd floor instructors room, Gymnasium EAST 3rd floor Meijium Lounge

### Ikuta Campus

- Main Building
  - 1st floor hall, 2nd floor conference room 1, 3rd floor faculty lounge, 5th floor support desk
- Library
  - 1st floor group study rooms 4, 6
  - 3rd floor group study rooms 1, 3
- Area 1
  - Building No. 2: 1st floor lounge
  - Building No. 3: 1st floor conference room
  - Building No. 5: 1st floor conference room (5103)
- Area 2
  - Building A: 4th floor conference rooms A406, A410
- Other
  - Cafeteria Square 21: 1st floor lounge
  - High Technology Research Center: 1st floor Piloti
  - Student Center: 3rd floor lounge

### 4.3. Accounts for Using Wireless LAN Connection Service

Wireless LAN Connection Service can be used with a Common Authentication System Account.

University staff and students having a Common Authentication System Account can use Wireless LAN Connection Service without needing to perform any procedures in advance.<sup>(\*)</sup>

<sup>(\*)</sup> Students are required to attend MIND orientation before they are allowed to use Wireless LAN Connection Service.

Persons not having a Common Authentication System Account (mainly research promoters, research assistants, and visiting fellows) will need to apply separately for a **MIND Mobile Account**.

Applying for a MIND Mobile Account is done by submitting a user application form. For more information, ask your school office, research promotion and intellectual property office, or other affiliated office.

**Inquire at the campus support desk regarding questions about usage.**

## 5. Network Setup

After obtaining a MIND Mobile Account (if needed) and readying the necessary equipment, you will need to configure the network settings on the PC for connection to a wireless LAN access point. The actual setup procedure on a typical PC is explained here.

### 5.1. Connecting to an Access Point

(a) If the PC has a separate switch for the wireless function, turn it on (Fig. 5-1-1).

\* The location of this switch differs depending on the PC model.



**Fig. 5-1-1. Wireless LAN On/Off Switch**



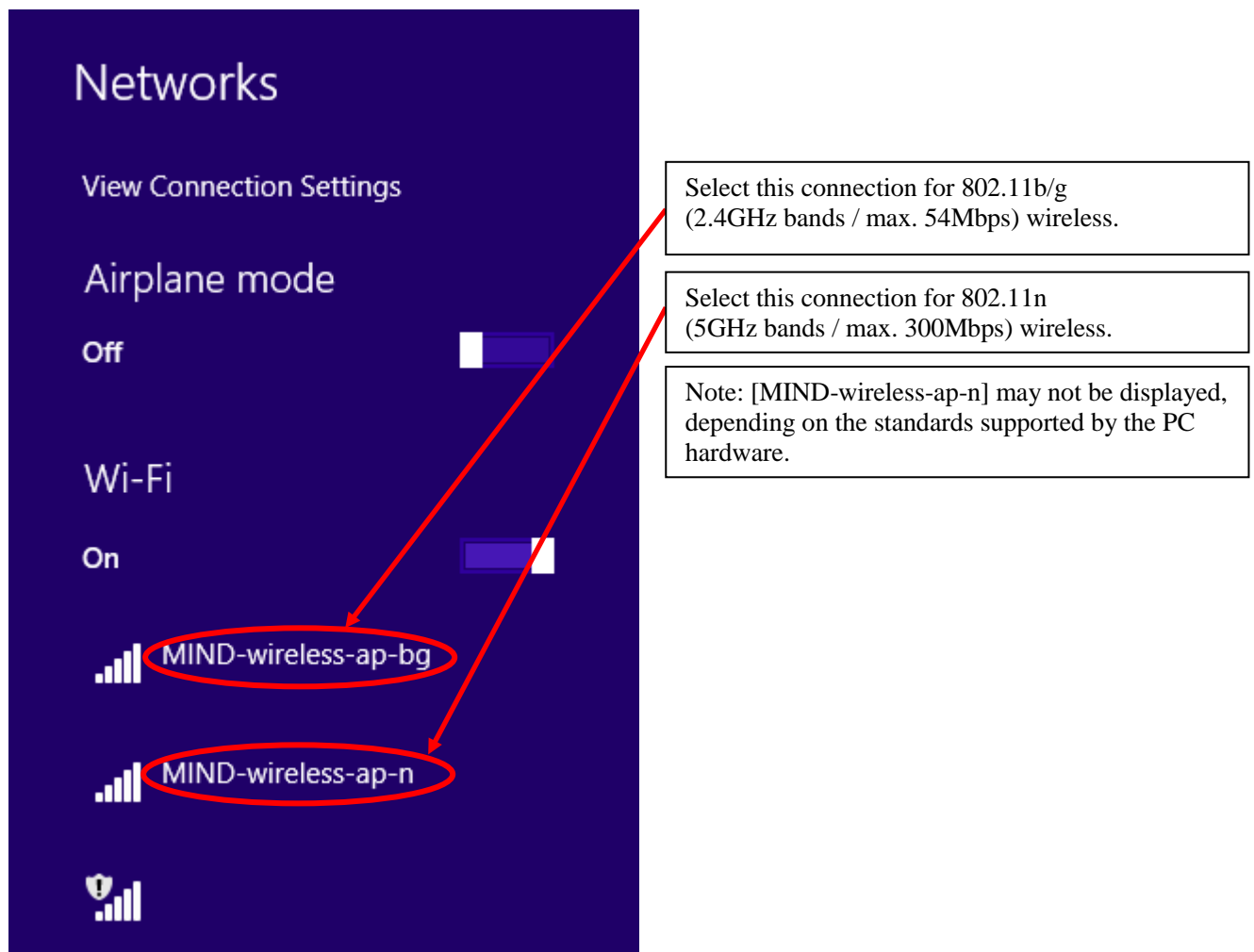
- (b) Click on the Network icon displayed at the lower right of the desktop (Fig. 5-1-2).



**Fig. 5-1-2. Network Icon**

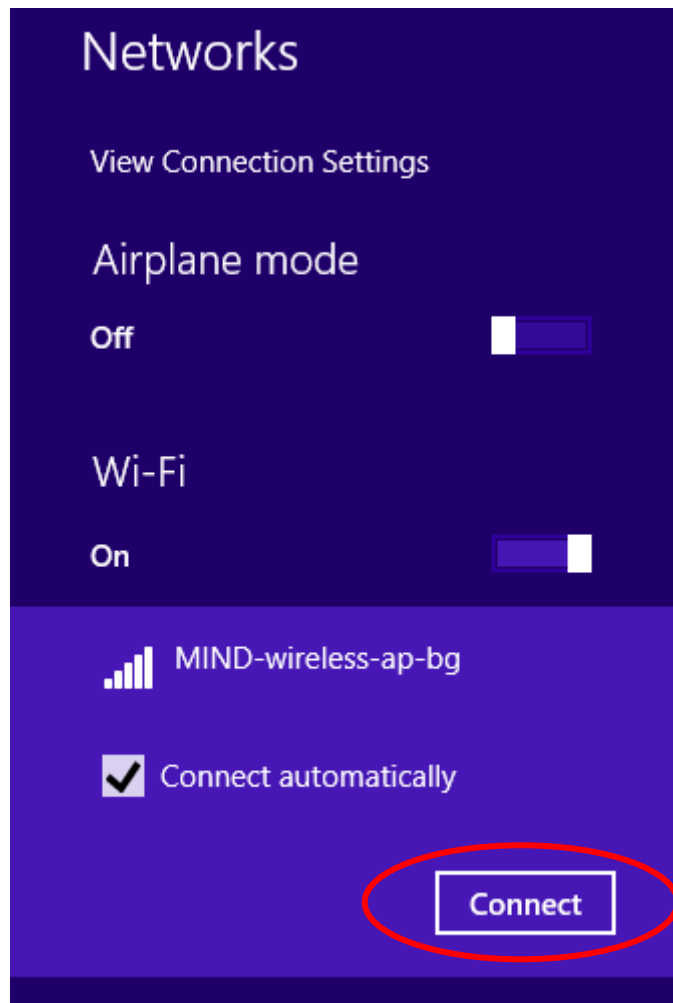
- (c) A list of available networks will be displayed.

Select [MIND-wireless-ap-bg] or [MIND-wireless-ap-n] (Fig. 5-1-3).



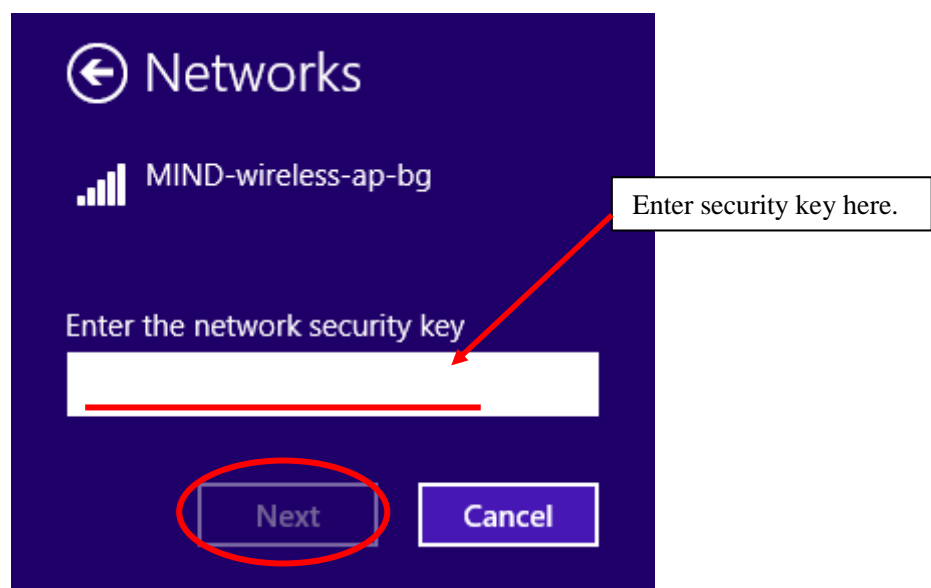
**Fig. 5-1-3. List of Available Networks**

- (d) After selecting the network you wish to connect to, click Connect (Fig. 5-1-4).
- \* Put a checkmark by "Connect automatically" if you want to continue using this connection thereafter.



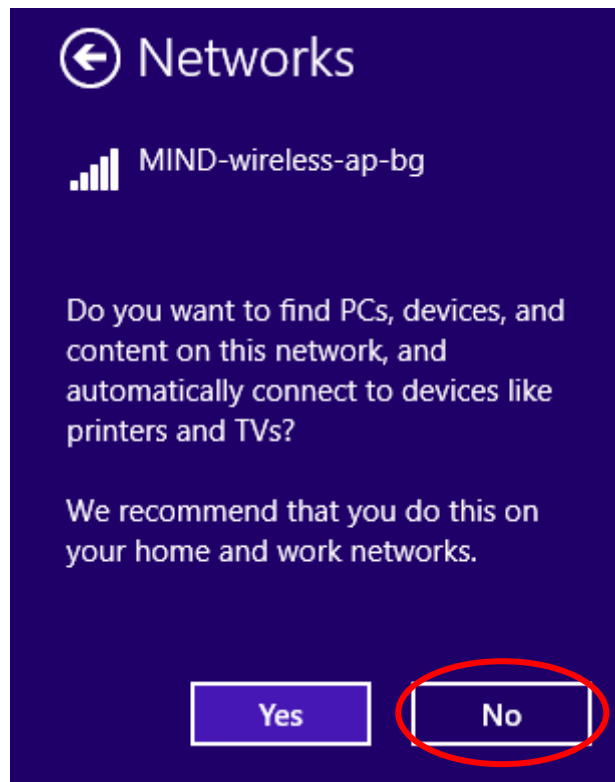
**Fig. 5-1-4. MIND-wireless-ap-bg Connection**

- (e) Enter the security key (cipher key). The key can be found by accessing <http://www.meiji.ac.jp/mind/wireless/local/> (see p. 6). Be sure to obtain it ahead of time (Fig. 5-1-5).



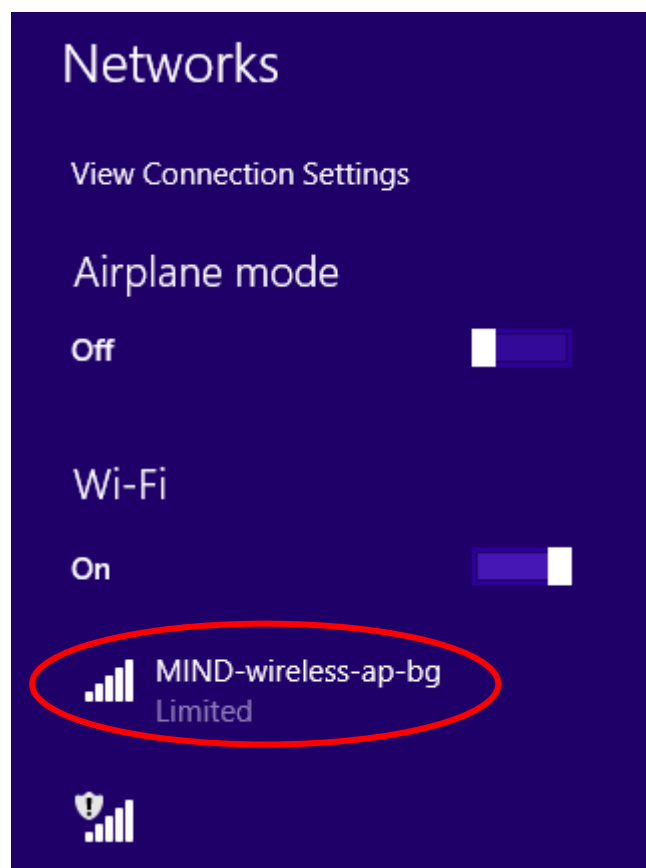
**Fig. 5-1-5. Security Key Entry**

- (f) Click No. (Fig. 5-1-6).



**Fig. 5-1-6. Whether to set the devices on the network automatically**

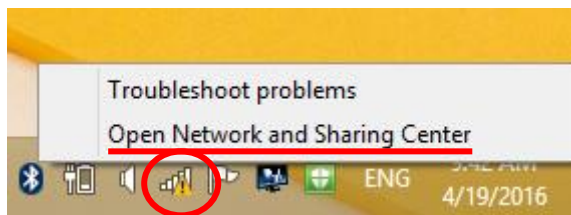
- (g) Upon successfully connecting to MIND-wireless-ap-bg, this connection is shown on the list of available networks as in use. It does not matter if there is a display with the “Limited” at this point (Fig. 5-1-7).



**Fig. 5-1-7. MIND-wireless-ap-bg Connected Status**

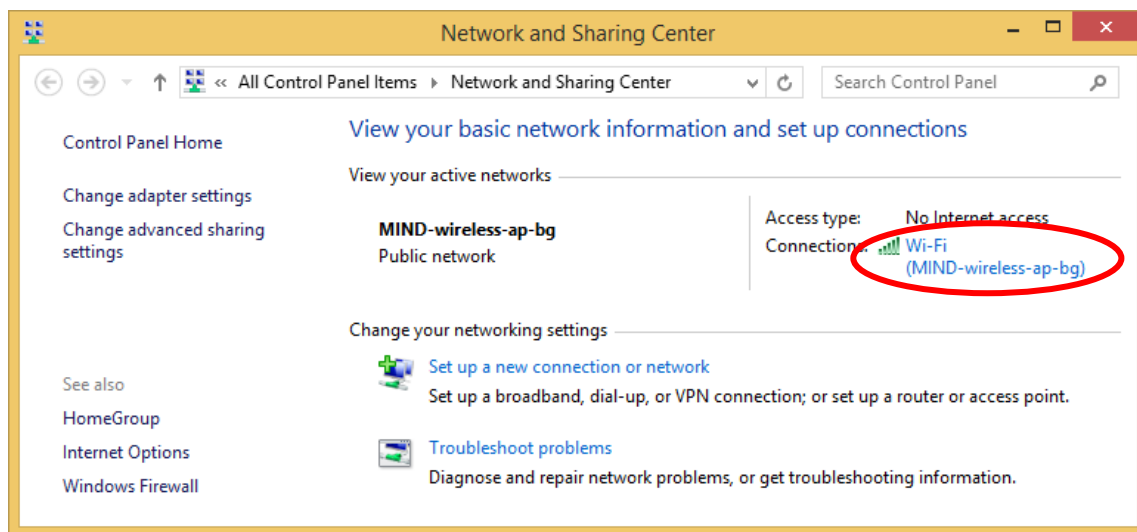
## 5.2. TCP/IP Setup

- (a) Right-click on the Network icon displayed at the lower right of the desktop, and select “Open Network and Sharing Center” (Fig. 5-2-1).



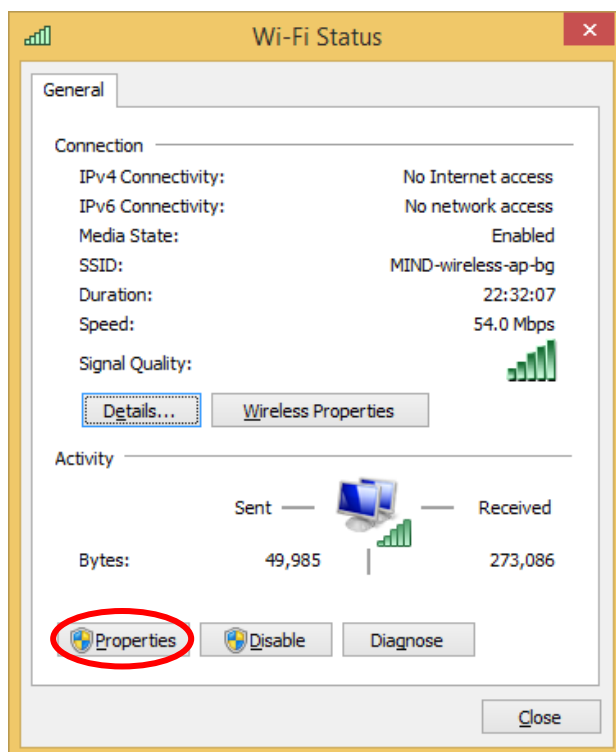
**Fig. 5-2-1. Open Network and Sharing Center**

- (b) When the Network and Sharing Center window appears, click MIND-wireless-ap-bg under View your active networks (Fig. 5-2-2).



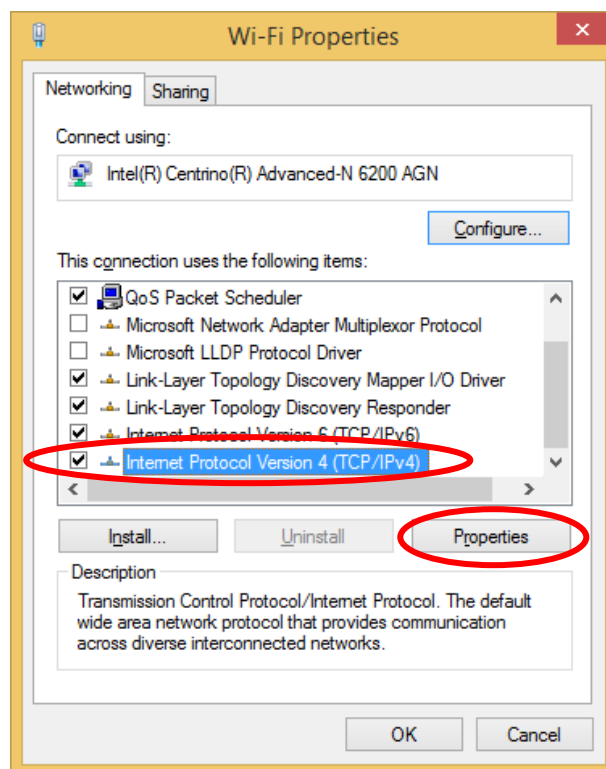
**Fig. 5-2-2. Selecting Wireless Network Connection**

- (c) In the Wi-Fi Status window click the Properties button (Fig. 5-2-3).



**Fig. 5-2-3 Wi-Fi Status Window**

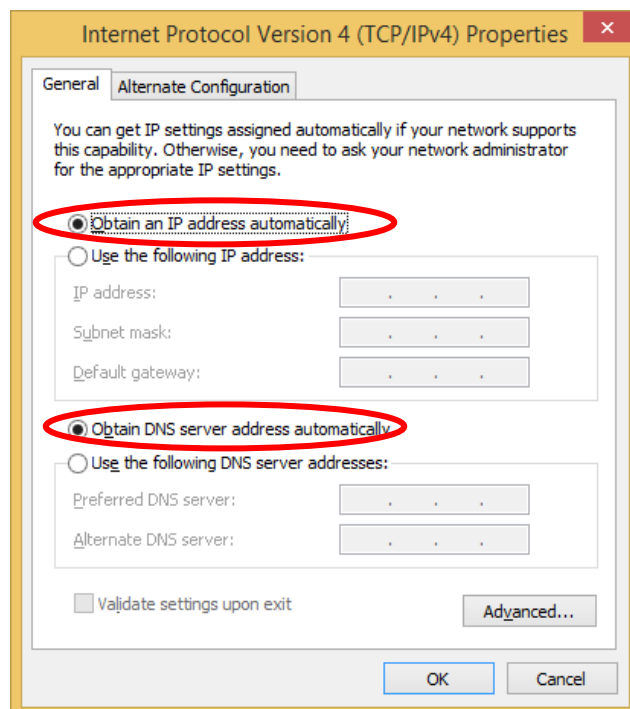
- (d) In the Wi-Fi Properties window, select Internet Protocol Version 4 (TCP/IPv4) and click the Properties button (Fig. 5-2-4). **Caution: Do not confuse Version 4 and Version 6!**



**Fig. 5-2-4. Wi-Fi Properties Window**

- (e) In the Internet Protocol Version 4 (TCP/IPv4) Properties window, on the General tab select "Obtain an IP address automatically" and "Obtain DNS server address automatically," then click OK (Fig. 5-2-7).

**Note: If there are values set under "Use the following IP address" and "Use the following DNS server addresses," write them down in case it is necessary to restore the PC to previously used settings.**



**Fig. 5-2-5. Internet Protocol Version 4 (TCP/IPv4) Properties Window**

- (f) That completes the TCP/IP setup. Before proceeding to 6. Web Browser Settings, close the open windows used for steps (d) and (c) by clicking the OK and Close buttons.

## 6. Web Browser Settings

### 6.1. Internet Explorer 11.x

- (a) Launch Internet Explorer from the desktop, Start menu, taskbar, etc., click the Tools icon displayed in the upper right, and select Internet Options (Fig. 6-1-1).

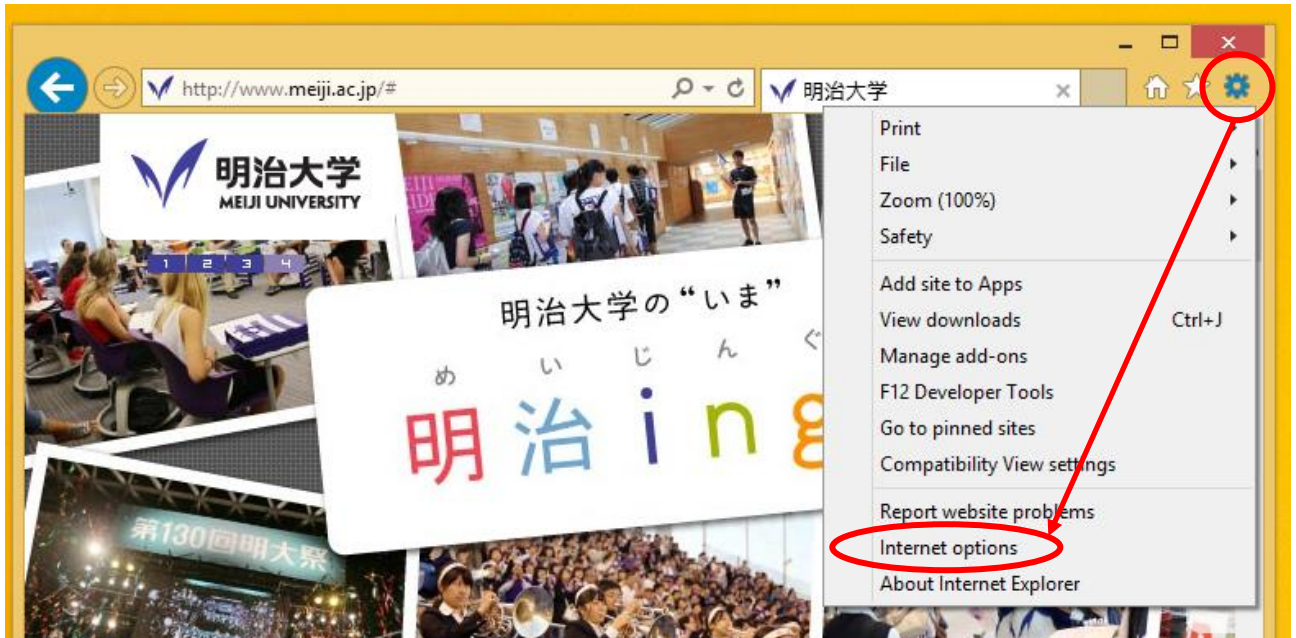


Fig. 6-1-1. Selecting Internet Options from the Tools Icon

- (b) In the General tab of the Internet Options window, enter <http://www.meiji.ac.jp/> as the Home page (Fig. 6-1-2).

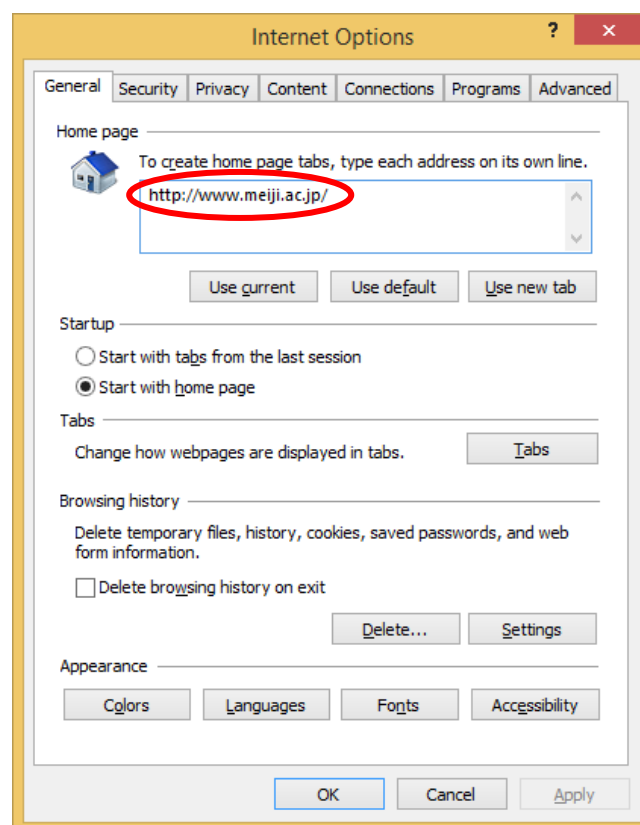
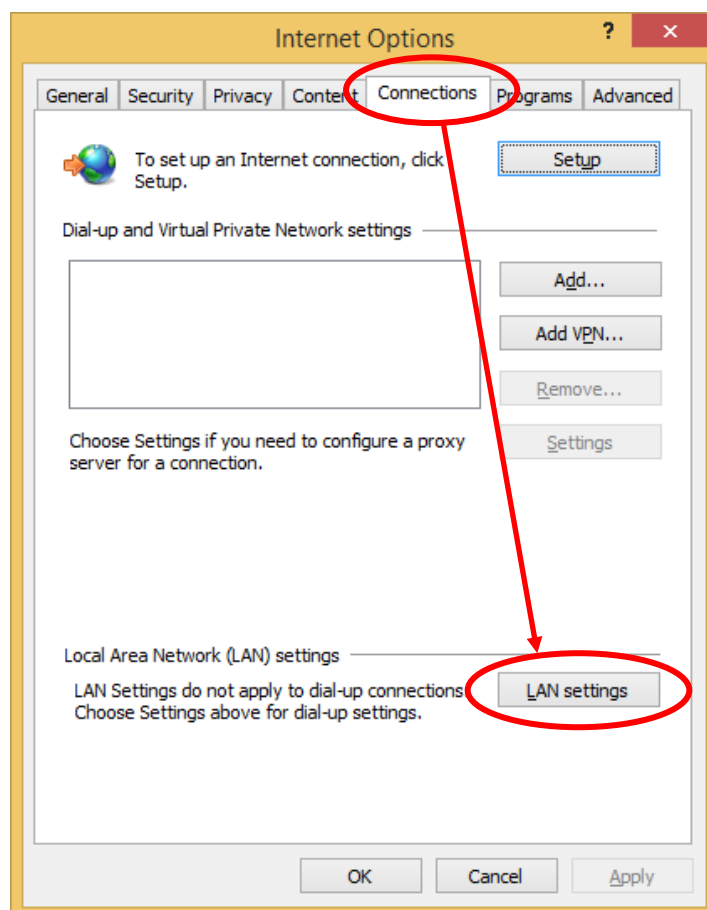


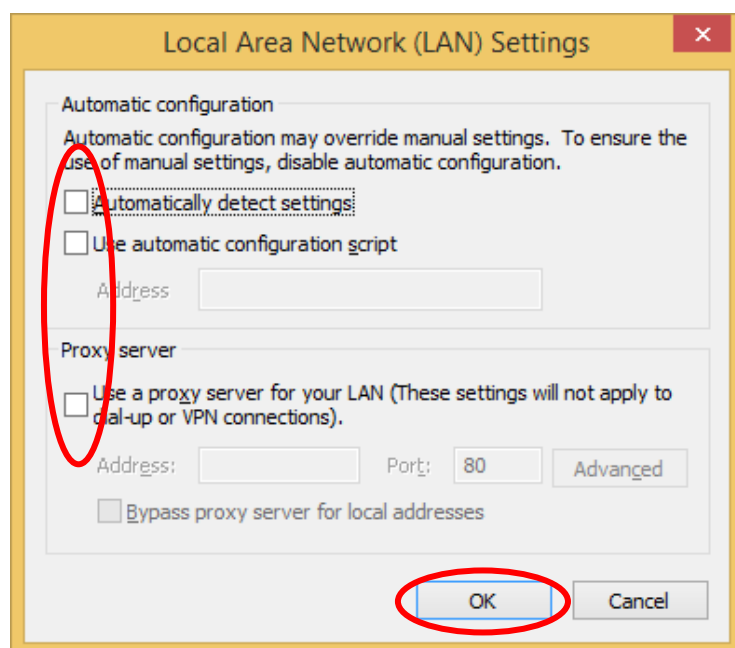
Fig. 6-1-2. Internet Options Window

- (c) Now open the Connections tab in Internet Options, and in the Local Area Network (LAN) settings section, click the LAN settings button (Fig. 6-1-3).



**Fig. 6-1-3. Selecting LAN Settings on the Connections Tab**

- (d) In the Local Area Settings (LAN) Settings window that appears, Uncheck all items, make sure that the proxy server has not been set, and click OK (Fig. 6-1-4).



**Fig. 6-1-4. Local Area Network (LAN) Settings Window**

- (e) That completes the settings in Internet Explorer 11.x. Click OK in the window used for step (c) to close the window.



## 6.2. Mozilla Firefox 21.x

- (a) Launch Mozilla Firefox from the desktop, Start menu, taskbar, etc., open the Tools menu, and select Options (Fig. 6-2-1).



Fig. 6-2-1. Selecting Options on the Tools Menu

- (b) Click General in the Options window and enter <http://www.meiji.ac.jp/> for Home Page in the Startup section (Fig. 6-2-2).

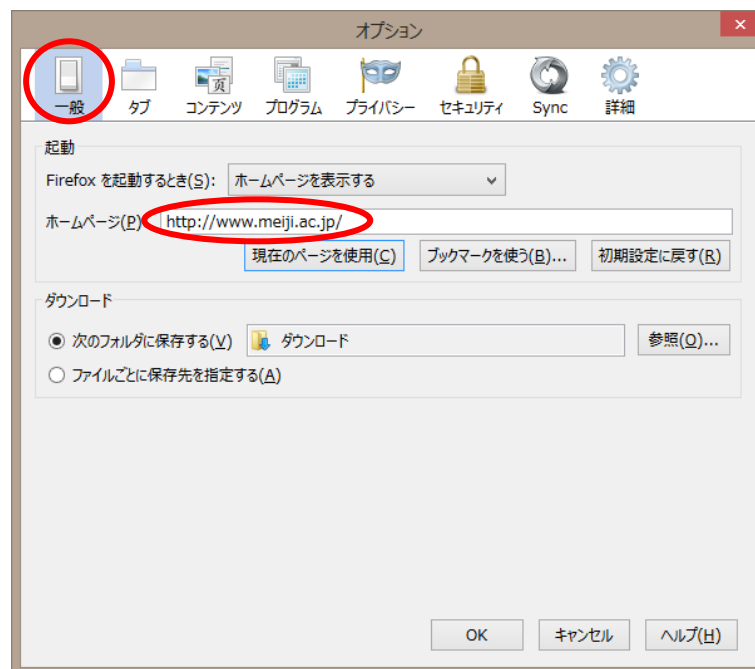
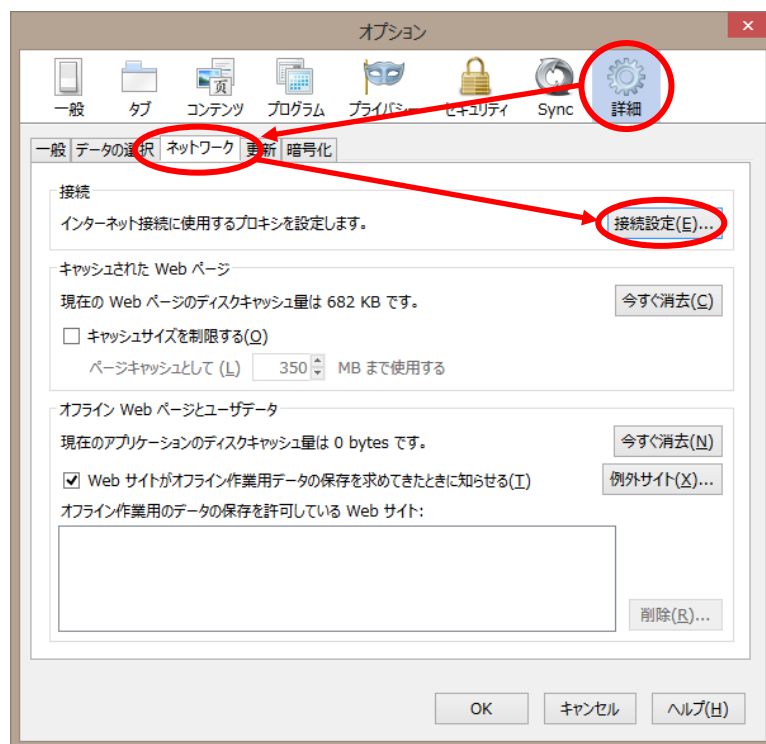


Fig. 6-2-2. Options (General) Window

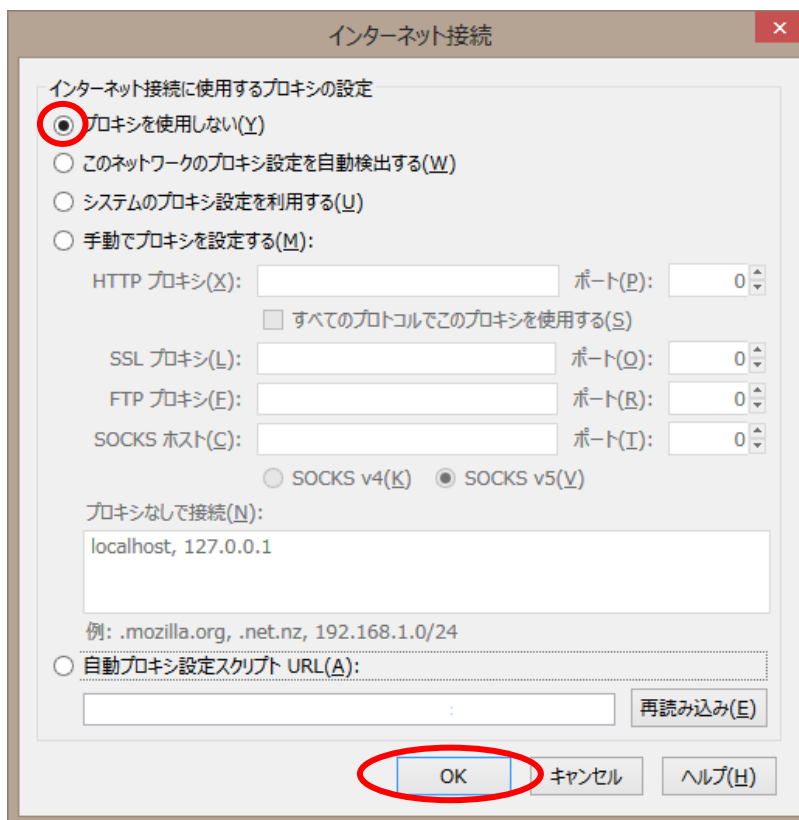


- (c) Now click Advanced, open the Network tab, and in the Connection section click Settings (Fig. 6-2-3).



**Fig. 6-2-3. Network Tab of the Options (Advanced) Window**

- (d) The Connection Settings window appears. Check “Bypass proxy server”, and click OK (Fig. 6-2-4).



**Fig. 6-2-4. Connection Settings Window**

- (e) That completes the settings for Mozilla Firefox 21.x. Click OK in the window used for step (c) to close the window.

## 7. Viewing Websites

Now try viewing the Meiji University website.

### 7.1. Surugadai campus (except Global Front), Ikuta campus, Izumi campus

- (a) Launch your web browser.
- (b) Upon launching, the Common Authentication System Account login window appears.

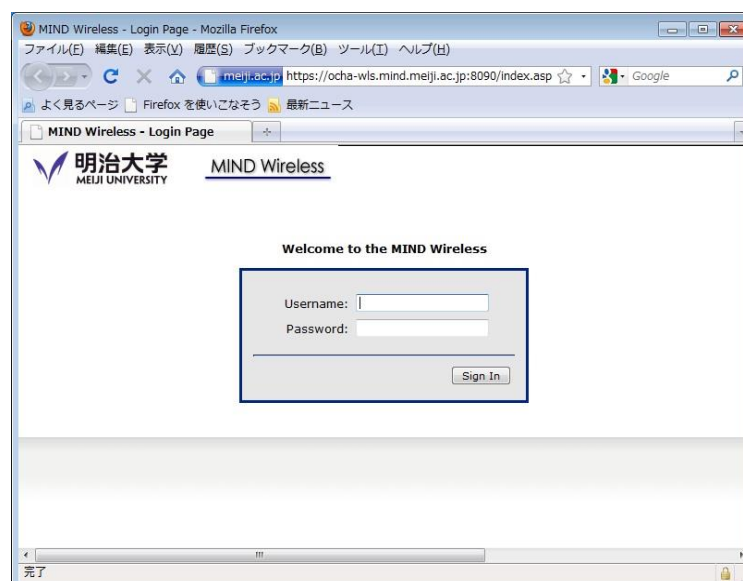
**\* In some cases the login window is not displayed. Click Refresh (or press F5) a few times until it appears.**

- Internet Explorer 11.x (Fig. 7-1-1)



**Fig. 7-1-1. Login Window in Internet Explorer 11.x**

- Mozilla Firefox 21.x (Fig. 7-1-2)



**Fig. 7-1-2. Login Window in Mozilla Firefox 3.x**

- (c) In this window, enter your login name and password for the Common Authentication System Account (or for those not having one, your MIND Mobile Account) and click the Sign In button.

- (d) The Meiji University MIND Wireless page loads (Fig. 7-1-3).

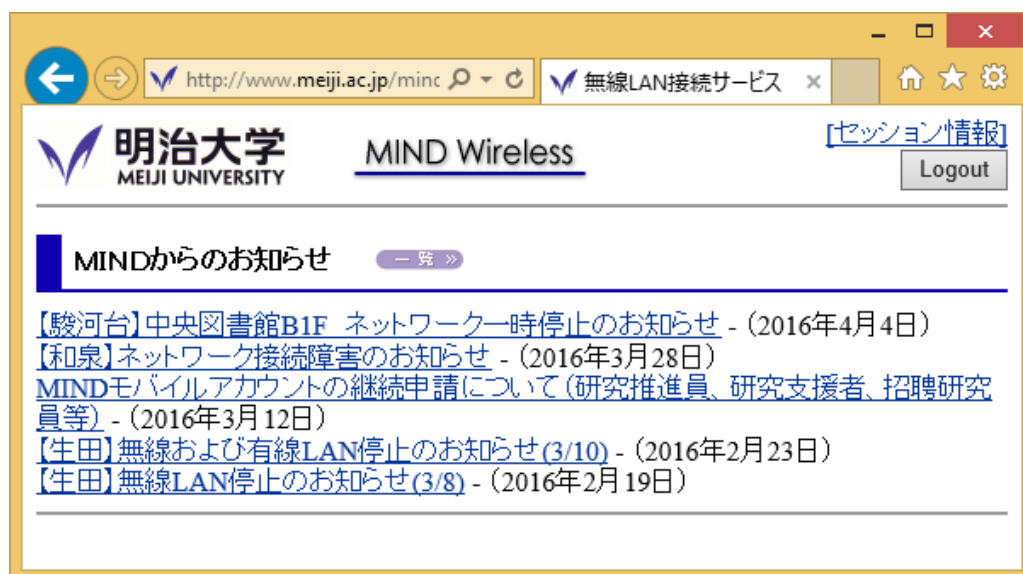


Fig. 7-1-3. MIND Wireless Top Page

- (e) Confirm that you can access off-campus sites, such as those in your Favorites list.

If you run into problems, try the suggestions at [8. Troubleshooting](#).

## 7.2. Surugadai campus (Global Front), Nakano campus

- (a) Launch your web browser.  
(b) Upon launching, the Common Authentication System Account login window appears.

**\* In some cases the login window is not displayed. Click Refresh (or press F5) a few times until it appears.**

- Internet Explorer 11.x (Fig. 7-2-1)

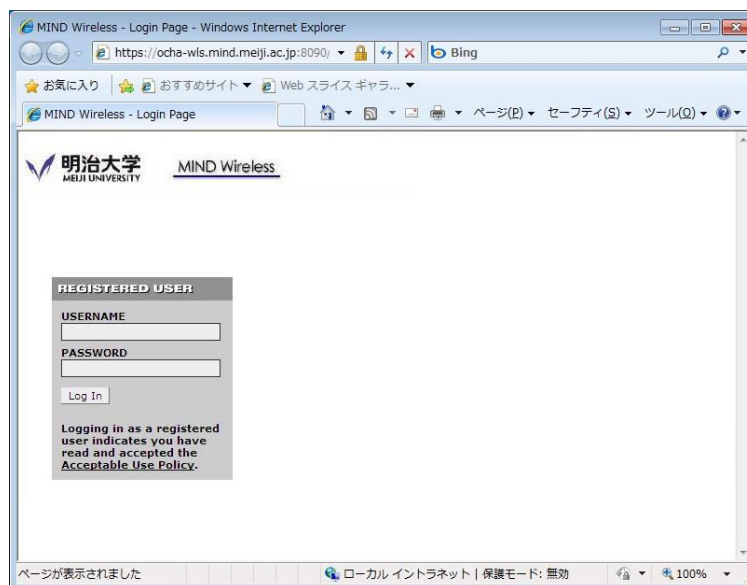
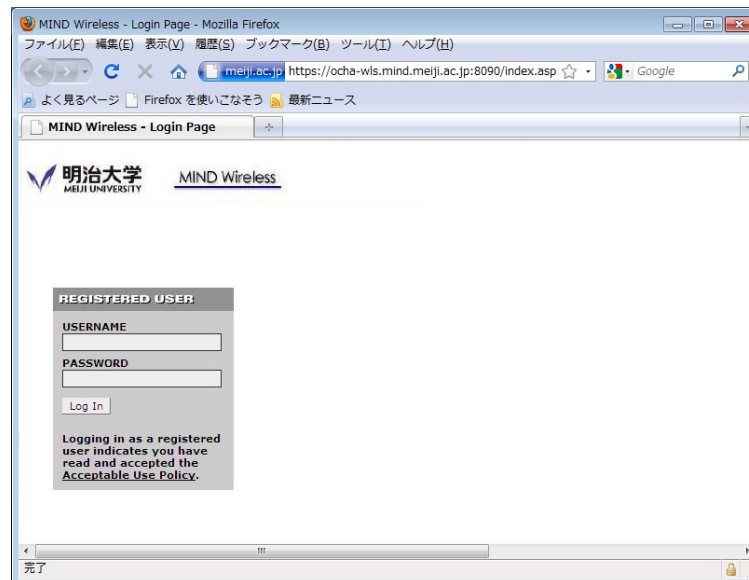


Fig. 7-2-1. Login Window in Internet Explorer 11.x

- Mozilla Firefox 21.x (Fig. 7-2-2)



**Fig. 7-2-2. Login Window in Mozilla Firefox 3.x**

- (c) In this window, enter your login name and password for the Common Authentication System Account (or for those not having one, your MIND Mobile Account) and click the Sign In button.
- (d) The Meiji University top page loads (Fig. 7-2-3).

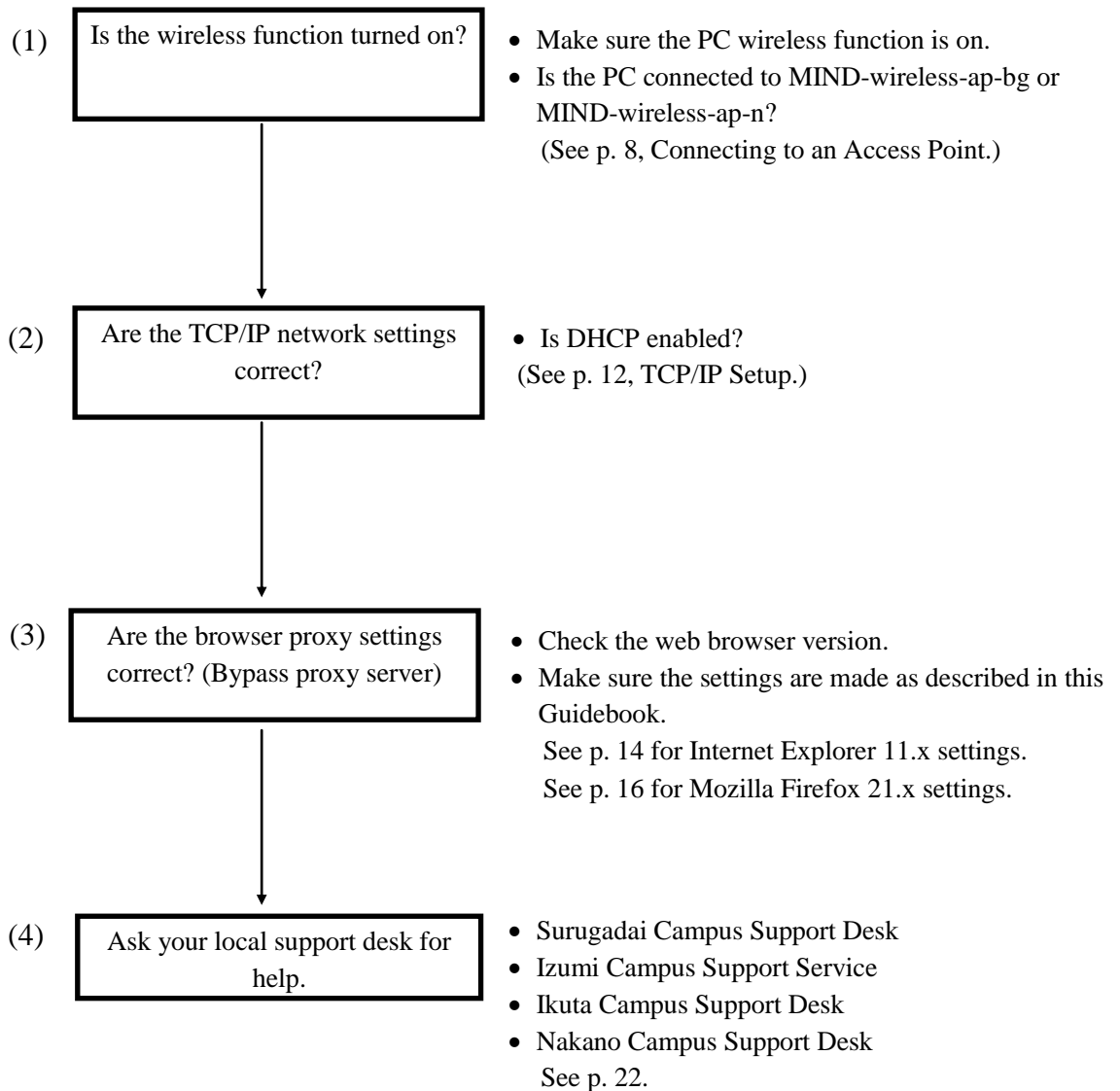


**Fig. 7-2-3. Meiji University Top Page**

- (e) Confirm that you can access off-campus sites, such as those in your Favorites list.  
If you run into problems, try the suggestions at [8. Troubleshooting](#).

## 8. Troubleshooting

The measures suggested to the right of each item assume Windows 8.1 as the PC OS.



## **9. Where to Inquire about Network Connections and Trouble**

### **Surugadai Campus:**

Surugadai Campus Support Desk

Location: 7F, Building No. 12

Tel.: 03-3296-4286 (Ext.: 4286)

Location: 7F, Liberty Tower

Tel.: 03-3296-2389 (Ext.: 2389)

Media Support Office

Location: 7F, Building No. 12

Tel.: 03-3296-4438 (Ext.: 4438)

### **Izumi Campus:**

Izumi Campus Support Service

Location: 1F, Izumi Media Building

Tel.: 03-5300-1190 (Ext.: 1190)

Izumi Media Support Office

Location: 1F, Izumi Media Building

Tel.: 03-5300-1189 (Ext.: 1189)

### **Ikuta Campus:**

Ikuta Campus Support Desk

Location: 5F, Main Building

Tel.: 044-934-7711 (Ext.: 7711)

Ikuta Media Support Office

Location: 5F, Main Building

Tel.: 044-934-7710 (Ext.: 7710)

### **Nakano Campus:**

Nakano Campus Support Desk

Location: 5F, Low-Rise Wing

Tel.: 03-5343-8072 (Ext.: 8072)

Nakano Campus Office

Location: 3F, Low-Rise Wing

Tel.: 03-5343-8012 (Ext.: 8012)

## 10. Reference URLs

Meiji University website	<a href="http://www.meiji.ac.jp/">http://www.meiji.ac.jp/</a>
MIND website	<a href="http://www.meiji.ac.jp/mind/">http://www.meiji.ac.jp/mind/</a>
IT Systems & Infrastructure Headquarters	<a href="http://www.meiji.ac.jp/isc/">http://www.meiji.ac.jp/isc/</a>
Support Desk, Reception Desk	<a href="http://www.meiji.ac.jp/mind/support/office.html">http://www.meiji.ac.jp/mind/support/office.html</a>
MIND Mobile Account user application	<a href="http://mobile.mind.meiji.ac.jp/">http://mobile.mind.meiji.ac.jp/</a>