

Effect of Integrate Implementation of the Multiple R&D Results in Safe Communities

To promote Safety Program...

To promote comprehensive safety program based on the scientific evidence in Safe Community, researchers need to cooperate with each other. Therefore, integration project by six research groups of the JST / RISTEX R&D Focus Area: Child Safety from Crime (FY 2007-2012) was started from 2013 to support Safe Community program.

This report reveals the effect of the application of R & D results that integrates implemented in Safe Communities of Atsugi City, Toshima City, Chichibu City and Kameoka City.

6 Groups divided into 2 Groups

Six research groups, such as each education, criminology and building science, medicine, safety engineering and information engineering, has been constructed from different disciplines. Research and development of them, has been school and home, community and home, hospital and home to the target. Therefore, in order to integrate implementation, six groups were divided into two groups: school target group and regional target group. To understand the respective needs in Atsugi City, it began to introduce the research and development results in accordance with the needs. Then, it was applied in Toshima City and Chichibu City and Kameoka City the R&D results that packages through the applied case in the field of Atsugi City.

Various Teaching Materials were Produced

Integration of the research results of safety learning and trauma surveillance on children of crime prevention, has produced educational materials of safety learning related to accident prevention of children. And integration of research results of the children's trauma and the workshop approach has produced the materials of hazard prediction training in kindergarten and the children's house. By the questionnaire on crime prevention incorporating the research results of the child's emotional evaluation, questionnaire to help international safe school program has been developed. Through the residents workshop, tools of Kiki-gaki map and safety inspections map, has been improved in an easy-to-use tool for the general public.

3 Synergy Effects were Observed

Integrated implementation of a number of research and development achievements in safe communities, three of the synergy effect was observed. First, teaching materials that can be applied to wide range of safety area from crime prevention to accident prevention has been developed. Second, by having a common application target of safe communities, facilitates combination of the research results, it was possible than before to increase the application target. Thirdly, as a result of improved research achievements through PDCA cycle, easy-to-use tools have been developed for users.



Fig.1 Multiple R&D Program for SC & ISS (<http://evisapo.com/en/>)

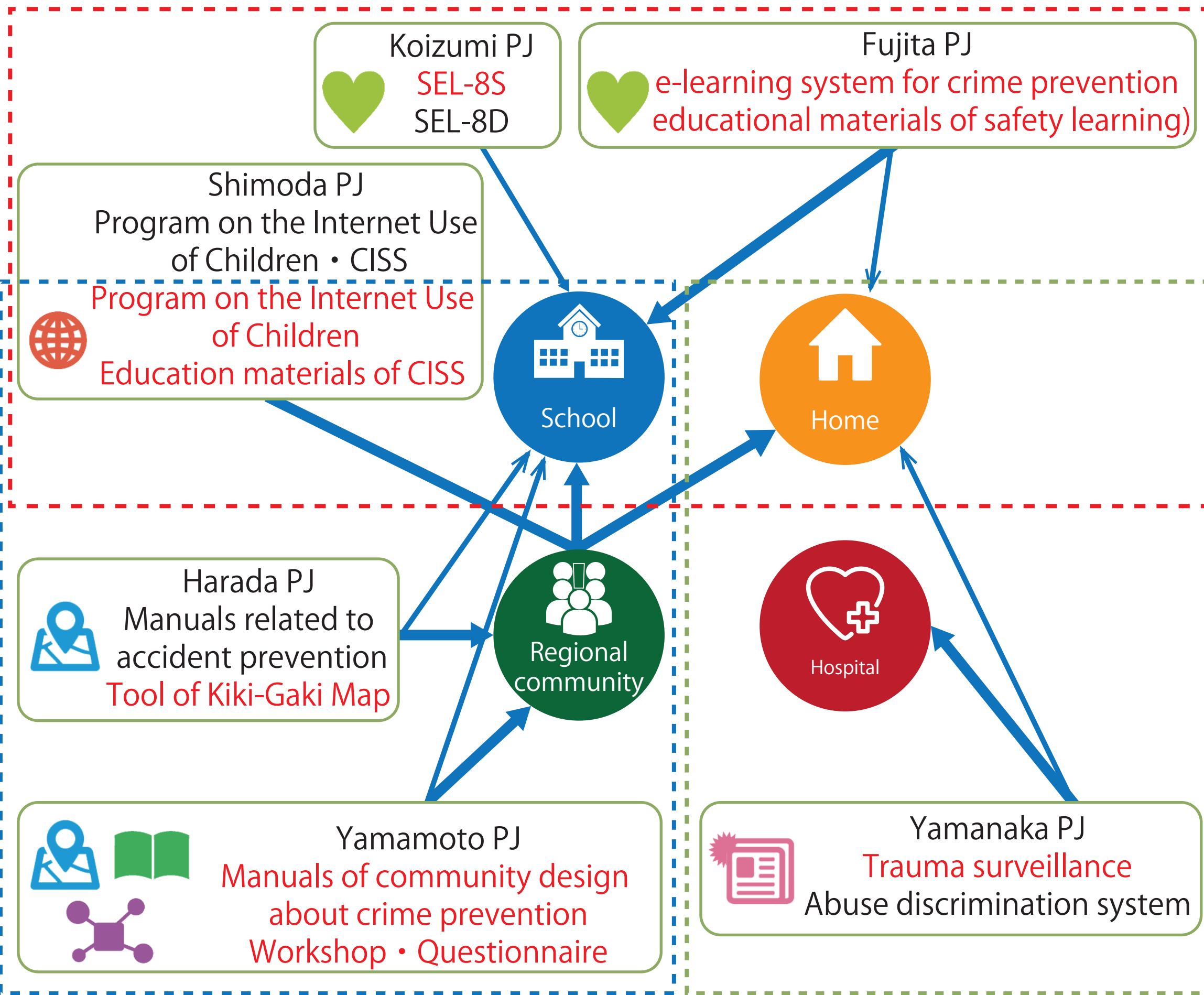


Fig.2 R&D Program by Six Research Groups Child Safety from Crime
SEL : Social-Emotional Learning
ISS: International Safe School

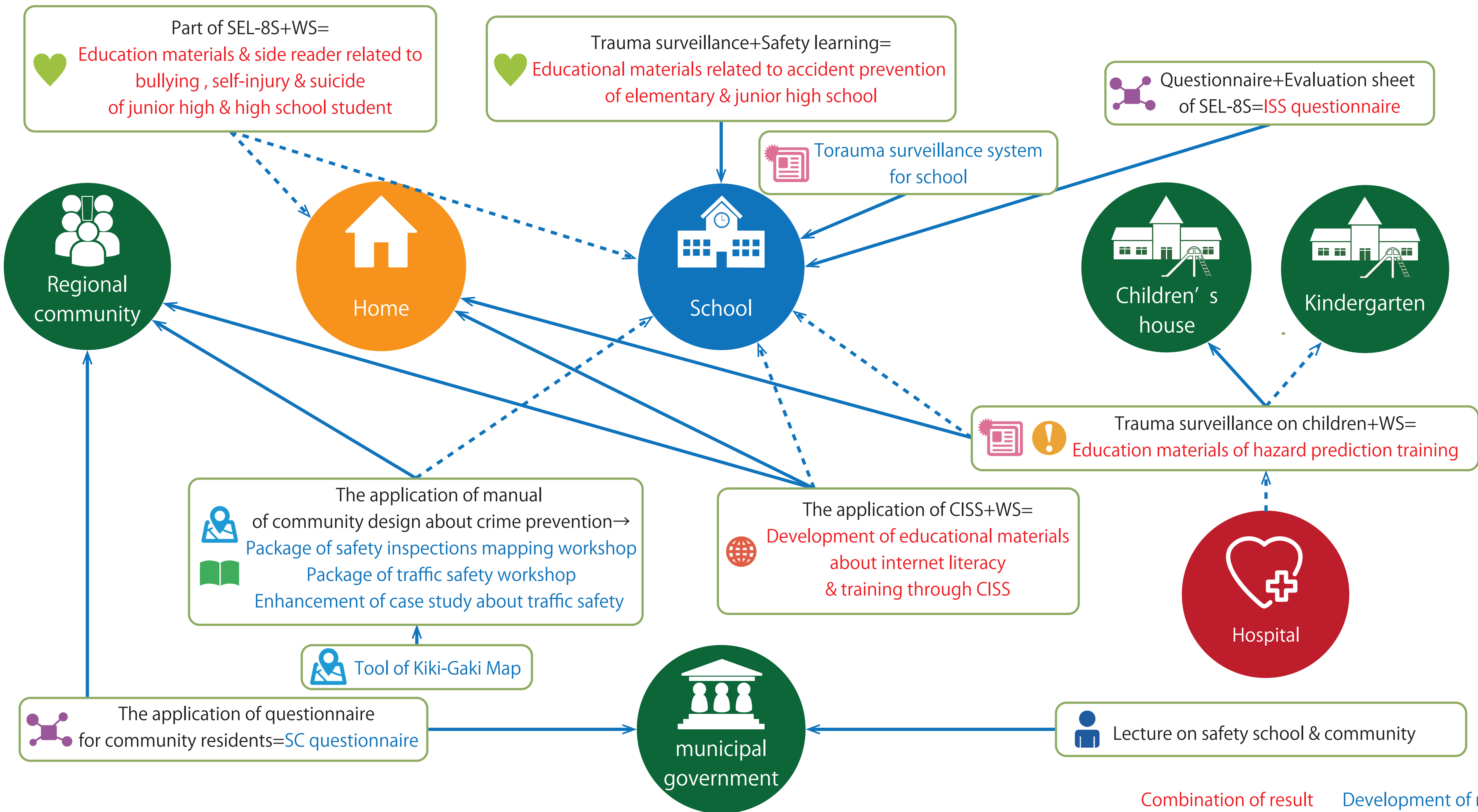


Fig.3 Integrate Implementation of the Multiple R&D Results in Safe Communities