

Community-Driven Housing Reconstruction and Planning

Relocation of Housing Group to High Lands

Land Preparation Is Going on

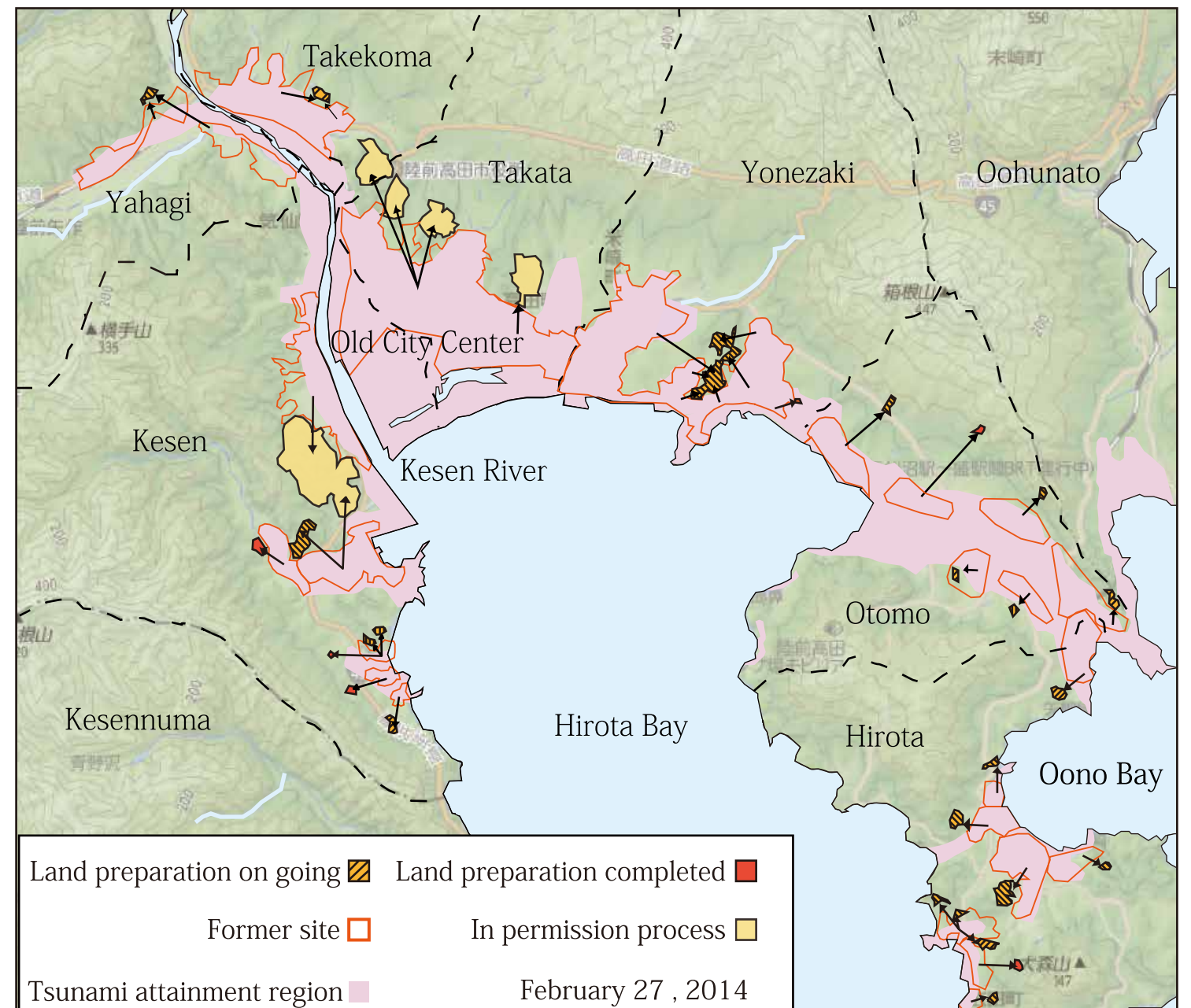
Many people want to relocate their houses on a high land in their community area, for they are afraid of living on low land and yet stay in or near their community. Their decision was to move out to another high land, for relocation in the area was found to be too cost as the area is so hilly. The project has been delayed due to change of the members, change of plan and shortage of construction labor. Now land preparation has started in many areas and some have started building houses. In large development area near the old city center, project schedule remains uncertain as it is related other uncertain projects.



Cutting the sloping land for residential land use



Housing construction has started



a distribution map of building the new residential area on the hill by group

The Residents Have Started Actions to Realize Their Vision

Restoring Their Life by Reconstruction of Their Houses

Their hope was to live in a traditional style house on high land where they can see the sea, to continue fishing works. But the local government stuck to their housing type to keep "equality". So the only way left for the residents was to do it without government support. They started to learn and discuss, to realize their vision, with help of professionals and building networks with neighborhood communities.

In many areas, people are relying on big developers to rebuild their house individually, not as a community. However in Taya community, they asked a planner to make a community housing plan, to create a beautiful housing landscape. They are also planning to use local materials and local builders.



Develop an idea by using the model



Proposal explanation by an architect on housing extension



Seminar on house rebuilding



Visit to a show-room of traditional structure system



Where to move - A high land with view of sea and port

Several Actions Not Only for The Housing

Relocation of housing area is a big impact for the entire town. So people, not only the groups of housing rebuilding but those whose houses were not damaged, got together and discussed about their future. They started to take actions in variety of fields to revitalize the community. Topics include utilization plan of low lands, fishery, wind power.



Develop ideas by using geographic model



Workshop to re-view the current status



To be the evacuation route from the fishing port

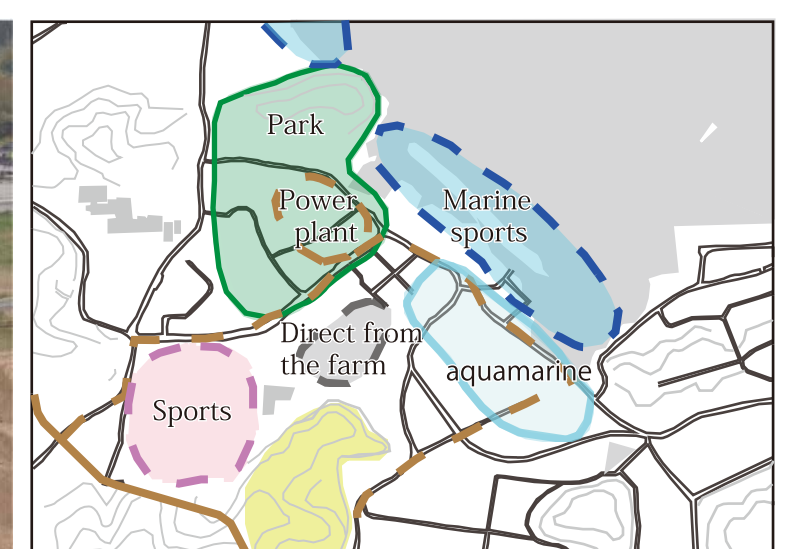


Image diagram of how to leverage lowland