

Introduction

The Revitalization Assistance Activities of OUR LABORATORY in Rikuzen-Takata

East Japan was damaged by the great earthquake, especially along the northern pacific coast, by the tsunami occurred accordingly. Much of the existed buildings - public facility, school, house, commercial - was swept away by the tsunami. Simple restoration would not be acceptable, and problems such as relocation of housing area or construction of high seawall have become serious.

It's been three years since the earthquake. It may seem that revitalization activities are making good progress. However, there are problems left unsolved or have become more serious as time passed by.

I would like to share our experiences at Rikuzen-Takata with you today.



Presentation in Hamburg, 2012



Exact model of an existed house

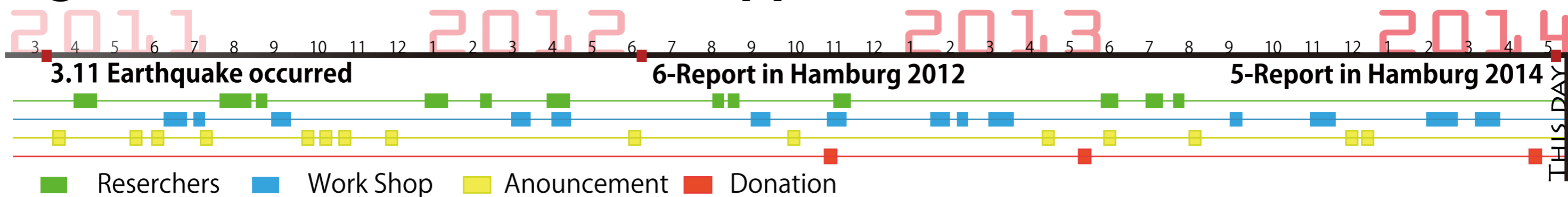


Reproduction model of house



Research of temporary housing

Agendas, Our Research and Support Activities



2011 Still all rubbled



2012 Rubble removal progressed

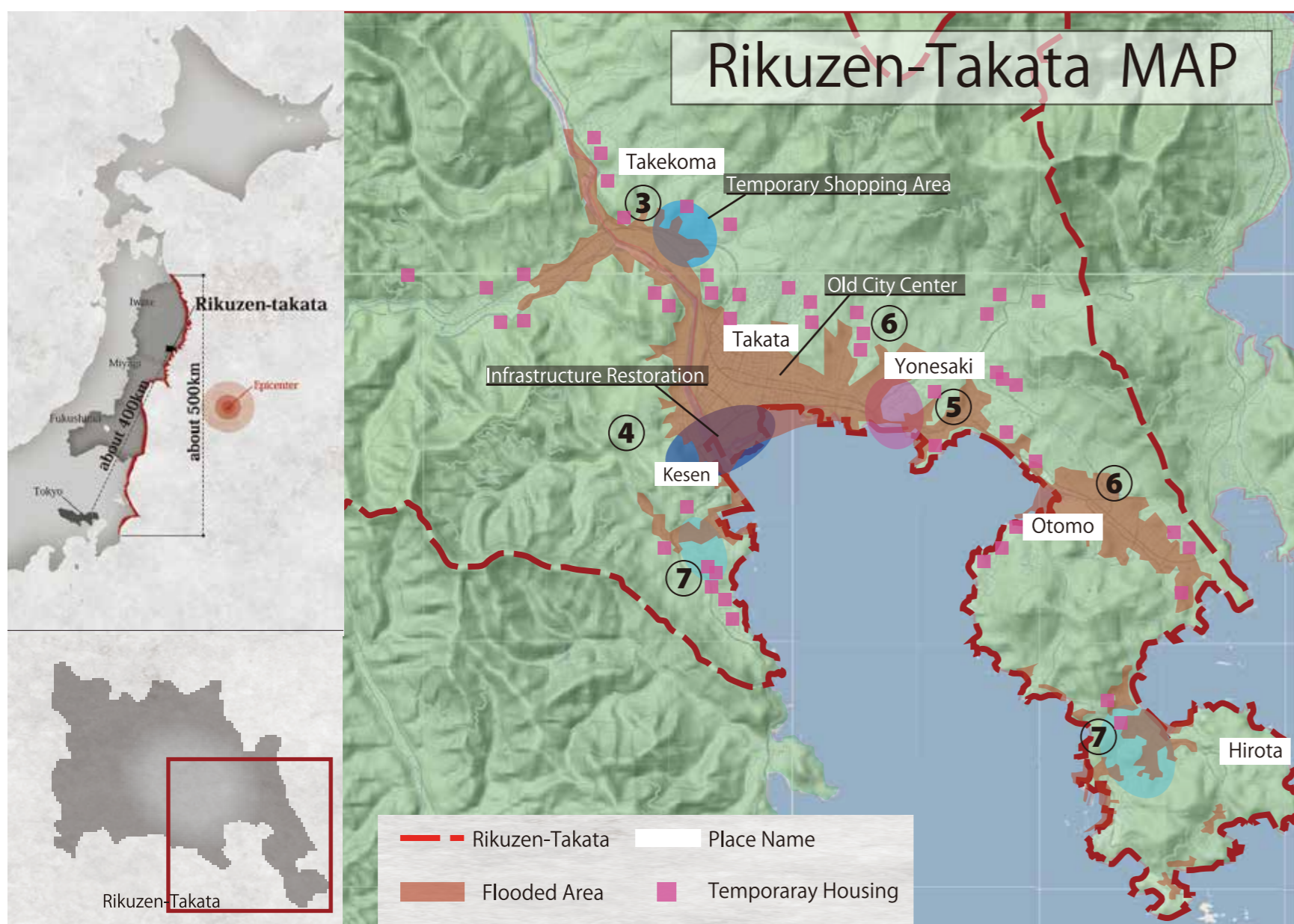


2013 Landfill



2014 Construction of public housing

From rubble covered, land filling and readjustment started gradually. Construction of public housing has begun. Our research topic has shifted from temporary housing to permanent community planning, along with the restoration process. Help is needed not only for housing, but for land use, job creation, etc



Contents of Presentation

1 Introduction	RESEARCH
2 Problems with temporary housing and kids' play spots	RESEARCH
3 Formation process of temporary shopping areas	RESEARCH
4 Gap between residents' voices and government program on infrastructure restoration	RESEARCH SUPPORT
5 Support for revitalization of Yonesaki	SUPPORT NEXT STEP
6 Making of Tsunami evacuation map	SUPPORT NEXT STEP
7 Community-based activities for restoration of housing	SUPPORT NEXT STEP
8 Next step toward revitalization	NEXT STEP