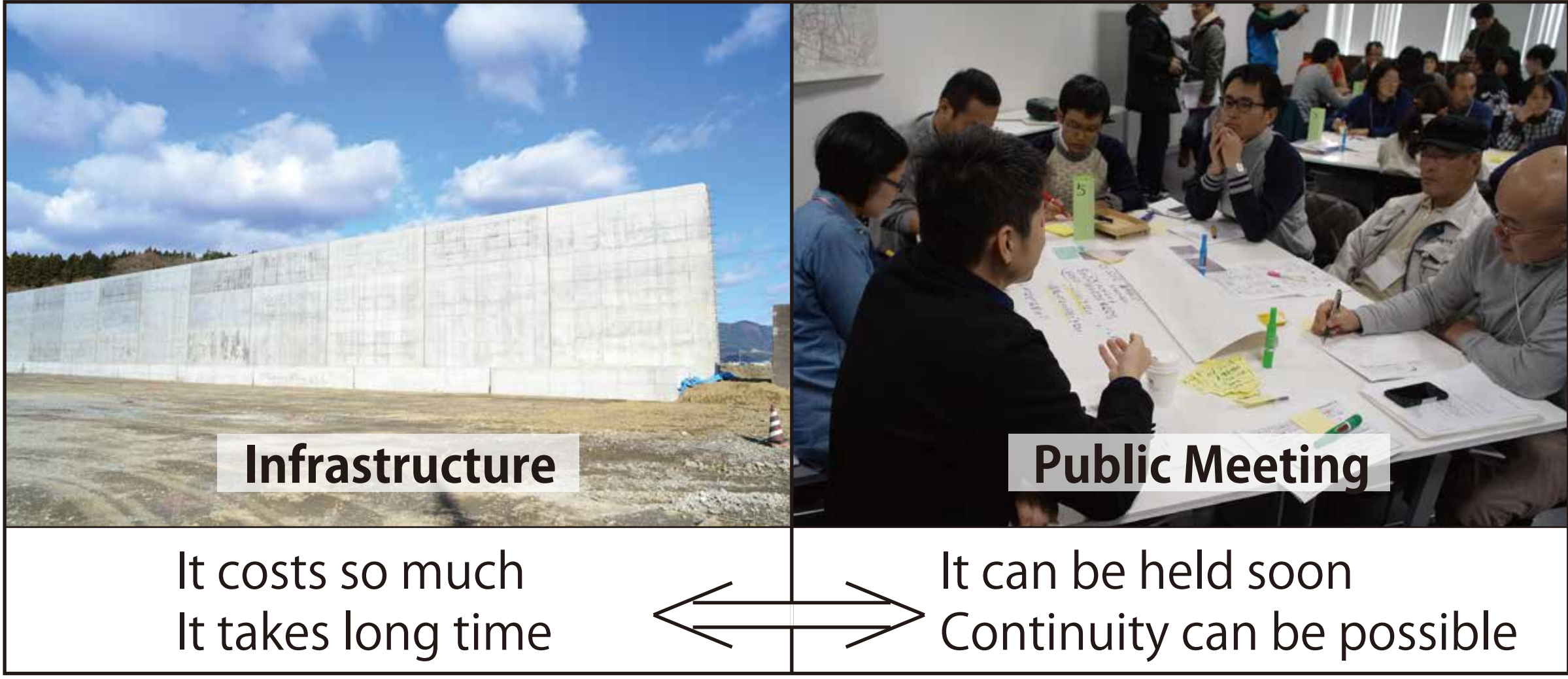


Community Design Utilizing Tsunami Evacuation Map “Nigechizu”

Not Only Rely on The Development of Infrastructure, But Think about The Evacuation Methods

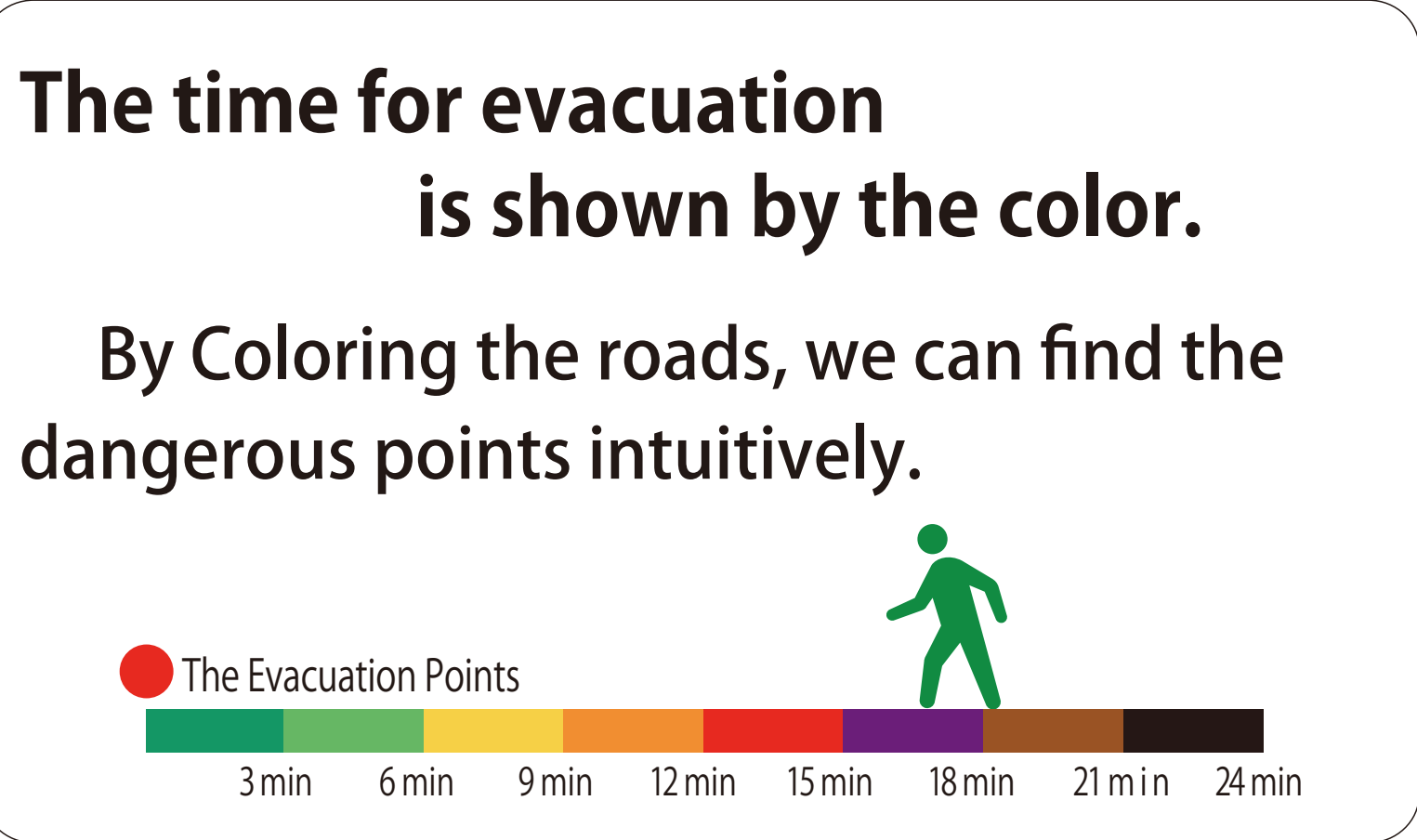
Since the Great Earthquake, awareness to prepare for disaster has grown. We cannot simply rely on huge structures to survive. The most important is to escape from danger, and prepare the ways to survive. The Evacuation Map is a method for the purpose.



A scene of evacuation on the disaster day

What's The Evacuation Map “Nigechizu” ? The Map That Shows Evacuation Time by Color Made with Residents

"Nigechizu" shows how much time it takes from a point of road to the nearest evacuation point by color. By making “Nigechizu”, participants can not only see the time to evacuate, but understand the risk of the community by making the map.



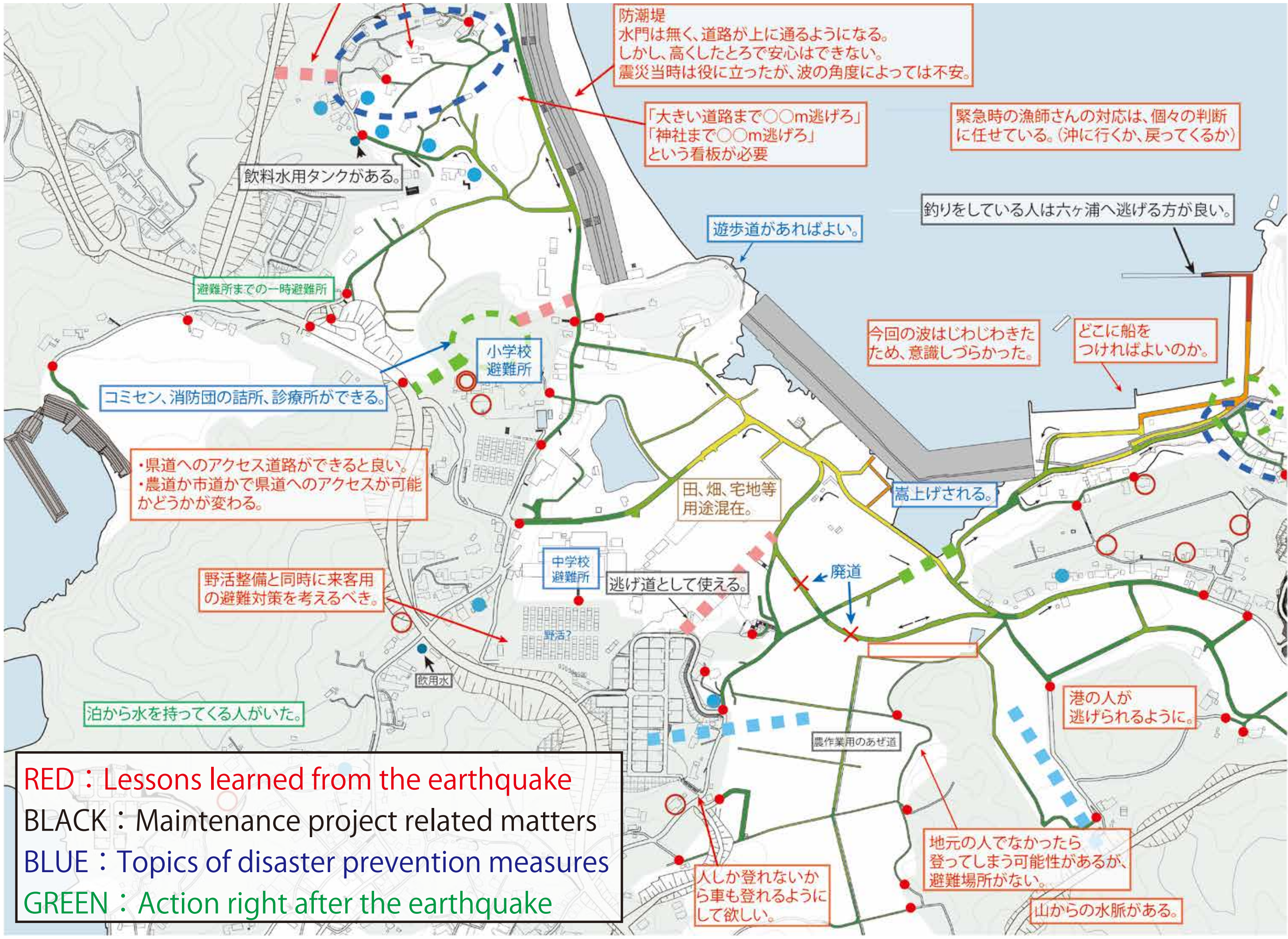
The Community Design Development by The “Nigechizu” More Than 100 diverse residents Participated in 3 Workshops

"Hirota District Relocation Council" has, from August till September 2014, carried out 3 Workshops. Residents discussed the reconstruction development plan and the disaster counter measures from the point of the evacuation of the tsunami. It held a publicmeeting and reported results in January, 2015.

The main results are shown in the two maps. "1. A map how can we escape", "2. A map to lead to reconstruction projects and disaster prevention measures".

Date	Main participant	The number of participants	Outline
5. Aug. 2014	Local junior high students	About 20 people	The participants of local junior high school students and university students volunteer created maps fled divided into 7 district.
24. Aug. 2014	Firemans	About 40 people	The evacuation maps that was created in the first round of workshop was modified and checked by firemans.
21. Sep. 2014	Women's group of the fishing co-operative	About 20 people	We discussed with reference to the comments that have been created in the workshop of the past two times.
11. Jan. 2015	The local person concerned	About 30 people	Summarized in two types of map, we held a debriefing session to local person concerned.

Workshop outline



Completed “Nigechizu”

"Konagani" Conference, to Discuss The Dream of Community Development

From December 2015 to February 2016, all four "Konagani"conference have been held at the Hirota. To take advantage of “Nigechizu” that was created in a workshop in 2014, we discussed “Outdoor Activity Center” relocation of plan in Hirota, and use the lowland where people no longer live after the tsunami. Also from the opinion that people should actually try walking the evacuation route on “Nigechizu”, there are plans to the walking to verify "Nigechizu". “Nigechizu” has actually started to be used in the town planning.

"Konagani" have the meanings of "future" in their own words in Hirota.



2nd "Konagani" conference



State of the announcement