

Guidebook for MIND Users

Wireless LAN Connection Service

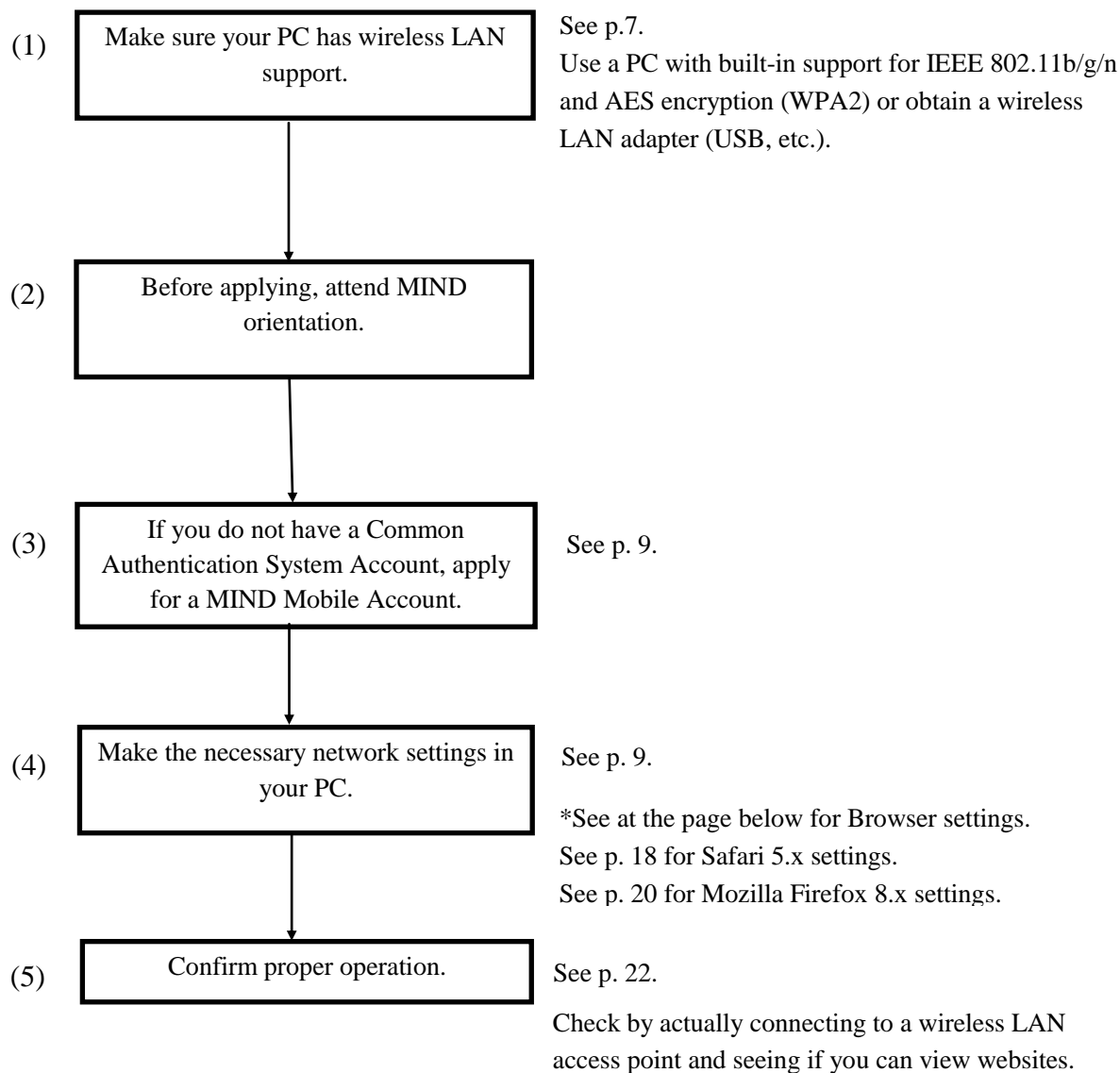
(Mac OS X Edition)

March 31, 2014

Network Promotion Division
IT Systems & Infrastructure Headquarters

Procedures for Using Wireless LAN Connection Service

This Guidebook explains how to use the wireless LAN service available on each campus. The procedures are outlined below. See the indicated pages for a more detailed description.



Contents

1. What Is MIND?	4
2. Connections to MIND	5
3. What Is Wireless LAN Connection Service?	6
4. Before Using Wireless LAN Connection Service	エラー! ブックマークが定義されていません。
4.1. Required Equipment.....	6
4.2. Wireless LAN Access Point Locations	7
4.3. Accounts for Using Wireless LAN Connection Service	9
5. Network Setup	エラー! ブックマークが定義されていません。
5.1. Setting Up AirPort.....	9
5.2. Connecting to an Access Point.....	12
5.3. TCP/IP Setup.....	15
6. Web Browser Settings	18
6.1. Safari 5.x	18
6.2. Mozilla Firefox 8.x.....	20
7. Viewing Websites	22
8. Troubleshooting	25
9. Where to Inquire about Network Connections and Trouble	26
10. Reference URLs	27

1. What Is MIND?

MIND (Meiji University Integrated Network Domain) is the general name for the networks in Meiji University. MIND connects to the science information network SINET operated by the National Institute of Informatics (NII) and to the commercial Internet service provider IJJ, as part of the overall Internet (Fig. 1). It can therefore be used for sending e-mail to people all over the world and for viewing Internet websites.

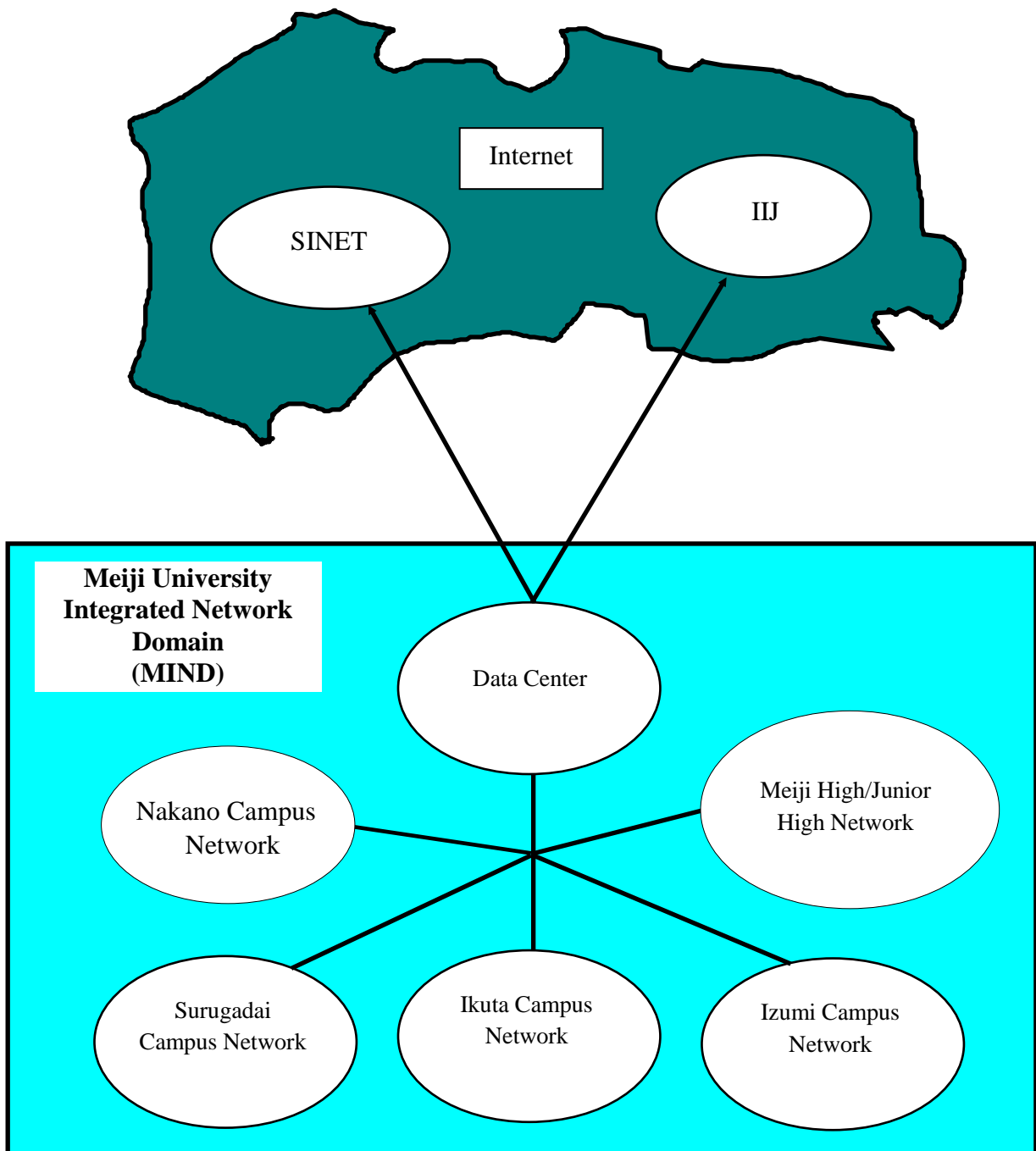


Fig. 1. Relation of MIND to SINET, IJJ, and the Internet

2. Connections to MIND

You will need to apply for use before you can connect a computer to MIND for accessing network services. The application procedures are of the following two kinds, depending on how you will be connecting a computer to MIND.

1. Procedure when using a computer located in a research office, laboratory, etc.

→ The person responsible for connection submits a MIND User Application to the IT Systems & Infrastructure Headquarters.

2. Procedure when using MIND Mobile Connection Services

(1) Mobile Information Outlet Connection Service

A service used for temporarily connecting to the network from a mobile information outlet installed on each campus.

(2) SSL-VPN Connection Service

A service for temporarily connecting to a university network from home, overseas, or other off-campus location using the Internet.

(3) Wireless LAN Connection Service

→ The individual user connects with a Common Authentication System Account.

(Those without such an account will need to apply for a MIND Mobile Account.)

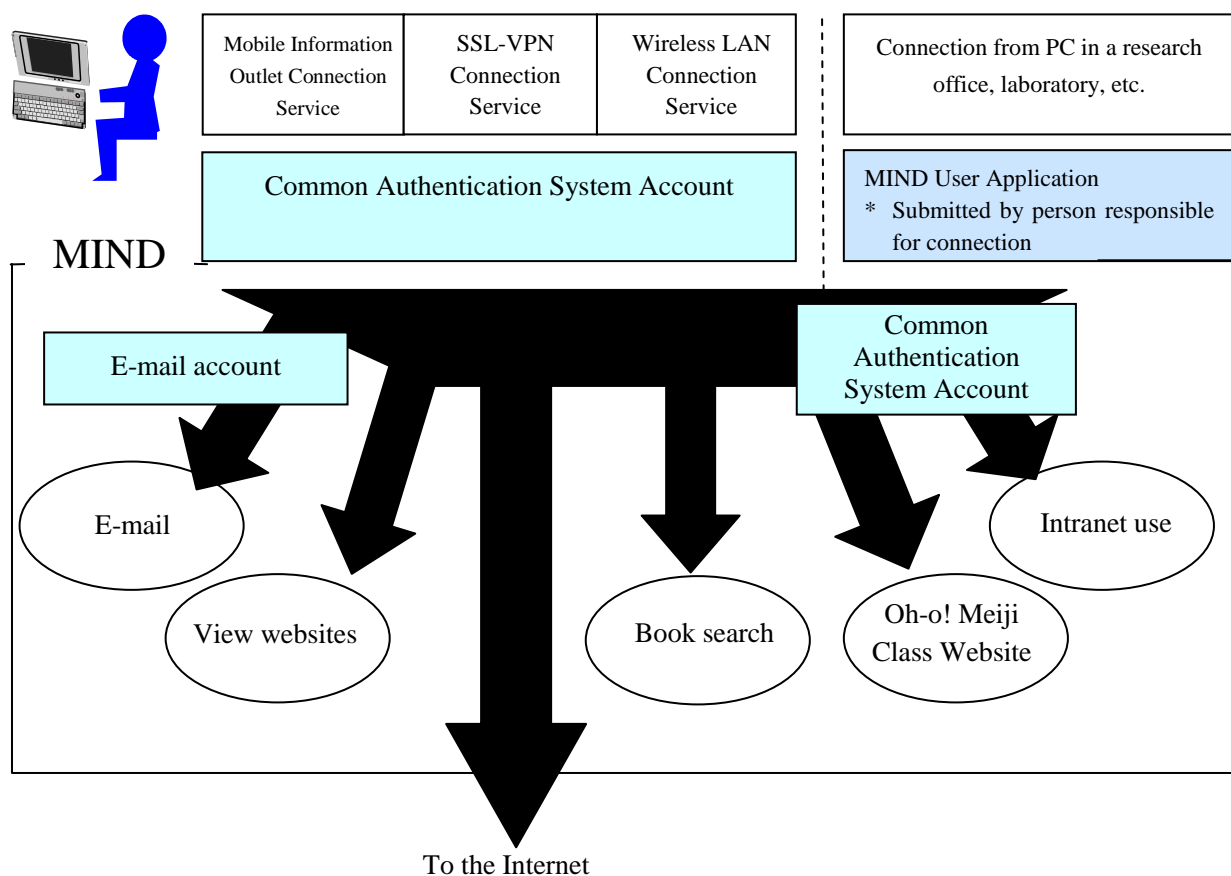


Fig. 2. Types of MIND Connections and Available Services

* After connecting to MIND, you will be able to make use of the e-mail service provided by the IT Systems & Infrastructure Headquarters, the book search service provided by the university libraries, and other services.

3. What Is Wireless LAN Connection Service?

Wireless LAN Connection Service lets you temporarily connect a notebook PC or other terminal to the university network (MIND) by wireless link.

By taking advantage of this connection service, you can use your own PC to access a WWW server and view websites, to send and receive e-mail, to use online library services, or to make use of other services provided by MIND, the IT Systems & Infrastructure Headquarters, the university libraries, and others.

This Guidebook describes the procedure for connecting a PC to the wireless LAN on a campus and notes precautions in use.

4. Before Using Wireless LAN Connection Service

4.1. Required Equipment

The wireless LAN specifications are as follows.

Wireless LAN standards	IEEE 802.11b/g (max. 54Mbps) IEEE 802.11n (max. 300Mbps)
Wireless LAN frequency bands	IEEE 802.11b/g: 2.4GHz band IEEE 802.11n: 5GHz band
Encryption	WPA2-PSK (AES)
SSID (service set identifier) and cipher key	http://www.meiji.ac.jp/mind/wireless/local/
Authentication method	Web authentication (must be performed the first time the web browser is launched)
Authentication account	Common Authentication System Account (faculty and students) or MIND Mobile Account (research promoters, visiting fellows, etc.)

If your PC comes with a built-in wireless LAN function conforming to the above specifications, it can be used as is. If such a function is not built in, you will need to purchase a wireless LAN card or adapter.

For viewing websites, you will need a web browser that supports proxy use. Safari 4.x or newer and Mozilla Firefox 3.x or newer browsers have proxy support.

Note: This Guidebook is written mainly assuming use of Mac OS X 10.6 as OS and either Safari 5.x or Mozilla Firefox 8.x as browser. If you need help with another OS or web browser, contact the support desk on your campus (see p. 26).

4.2. Wireless LAN Access Point Locations

Wireless LAN access points are installed in the following locations (as of April 1, 2011).

See the following page for details of the locations.

<http://www.meiji.ac.jp/mind/wireless/index.html>

Surugadai Campus

- Liberty Tower
 - Central Library basement lounge, reading rooms in basement and on 1st floor
 - 1st floor Lounge Marronnier, Kosei Matsui Hall, Liberty Hall
 - 2nd floor lobby (in front of vending machines)
 - 3rd floor faculty lounge
 - 7th floor support desk
 - 19th floor conference rooms 6 and 7
- Academy Common
 - 2nd floor conference rooms A1 and A6
 - Academy Hall on 3rd to 5th floors
 - Fellowship salons on 7th to 10th floors
 - 8th floor simulated classroom
 - 10th floor faculty lounge
 - 11th floor fellowship lounge
- Faculty Office Building
 - 2nd floor conference rooms 8, 9, and 10
 - 4th floor faculty lounge and conference rooms 1, 2, 3, and 7
- Building No. 12
 - 1st floor hall
 - 4th floor faculty lounge
 - 5th floor classroom 2052
 - 7th floor support desk
- Building No. 14
 - 4th floor exchange student lounge

Izumi Campus

- Building No. 1
 - 1st floor lounge and office
 - 6th floor conference room 1
- Building No. 3
 - 1st floor international lounge
- Faculty Office Building No. 1
 - 1st floor meeting room
- Media Building
 - 1st floor lounge, support service, faculty lounge
 - 2nd floor in front of media lab, near toilets, study halls M203 and M204
 - 3rd floor classrooms M301, M302, M303, M304, M305, and M306
 - 4th floor lounges (east and west sides)
 - 5th floor lounge
 - 6th floor (all)

- Gymnasium EAST and WEST
 - 2nd floor instructors room

Ikuta Campus

- Main Building
 - 1st floor hall
 - 2nd floor conference rooms 1 and 3
 - 3rd floor faculty lounge
 - 5th floor support desk, room 0501
 - 6th floor media hall
- Library
 - 1st floor group study rooms 4, 6
 - 3rd floor group study rooms 1, 3
- Area 1 Building No. 2
 - 1st floor lounge
 - Faculty lounge
- Area 1 Building No. 3
 - 1st floor conference room
- Area 1 Building No. 5
 - 1st floor conference room (5103)
 - 2nd floor room 206
- Area 2 Building A
 - 2nd floor classroom A208
 - 4th floor classroom A403 (research conference room), conference rooms A406 and A410, classroom A417 (special presentation classroom)
 - 5th floor classroom A510 (Office of General and Cultural Studies conference room)
 - 7th floor classroom A715 (Department of Electronics and Bioinformatics classroom)
 - 11th floor classroom A1112 (Department of Architecture reference room)
- Area 2 Building No. 6
 - 2nd floor room 6213 (Department of Physics reference room)
 - 5th floor room 6506 (Department of Computer Science reception room), room 6515 (Department of Computer Science reference room)
 - 6th floor room 6606 (Department of Mathematics reference room)
- Cafeteria Square 21
 - 1st floor lounge
- High Technology Research Center
 - 1st floor Piloti

4.3. Accounts for Using Wireless LAN Connection Service

Wireless LAN Connection Service can be used with a Common Authentication System Account.

University staff and students having a Common Authentication System Account do not need to perform any procedures in advance.^(*)

^(*) Students must attend MIND orientation before they can use MIND Mobile Connection Services.

Persons not having a Common Authentication System Account (mainly research promoters, research assistants, and visiting fellows) will need to apply separately for a **MIND Mobile Account**. Applying for a MIND Mobile Account is performed online using a web browser (Safari, Firefox, etc.). To make application, access <http://mobile.mind.meiji.ac.jp/index.html>.

5. Network Setup

After obtaining a MIND Mobile Account (if needed) and readying the necessary equipment, you will need to configure the network settings on the PC for connection to a wireless LAN access point. The actual setup procedure on a typical PC is explained here.

5.1. Setting Up AirPort

- (a) Click on the wireless LAN icon displayed at the upper right of the desktop (Fig. 5-1-1).



Fig. 5-1-1. Wireless LAN Icon

- (b) On the pull-down menu that appears, select Open Network Preferences (Fig. 5-1-2).

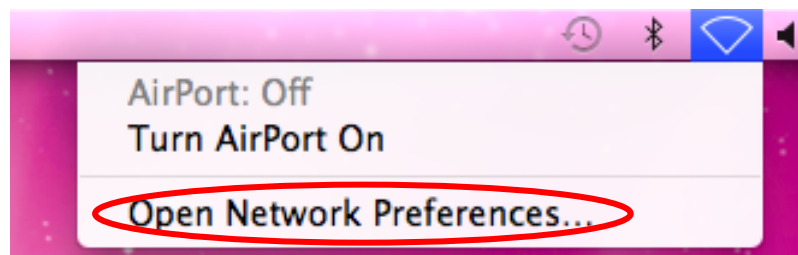


Fig. 5-1-2. Select Open Network Preferences

- (c) Click the "+" mark at the lower left of the Network window (Fig. 5-1-3).

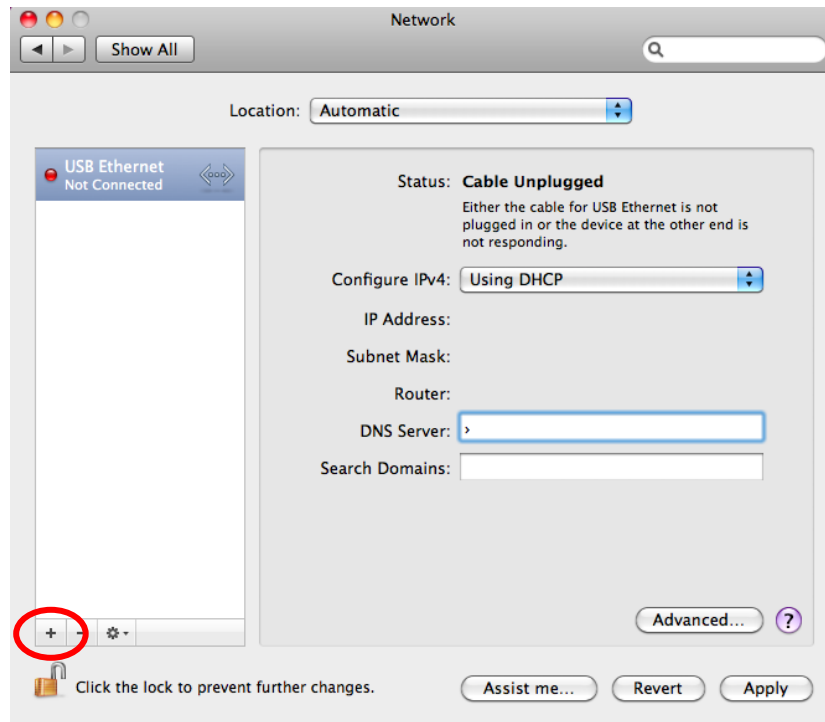


Fig. 5-1-3. Click the "+" Mark in the Network Window

- (d) Select AirPort as the Interface and set any Service Name. After completing the settings, click Create to finish (Fig. 5-1-4).

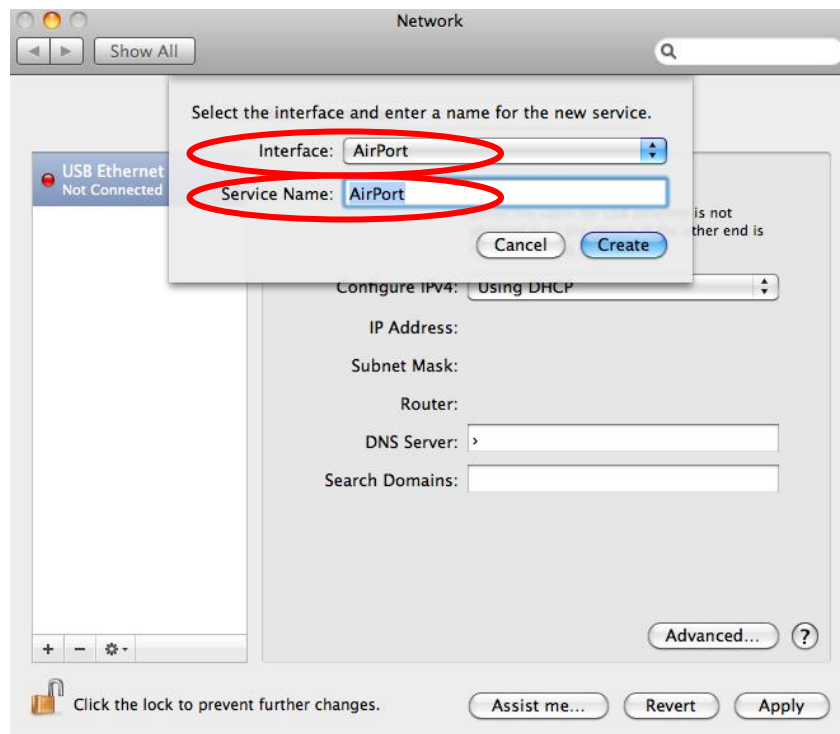


Fig. 5-1-4. Set the Interface and Service Name

- (e) When the new network connection has been registered, the name set in (d) appears. Click Apply (Fig. 5-1-5).

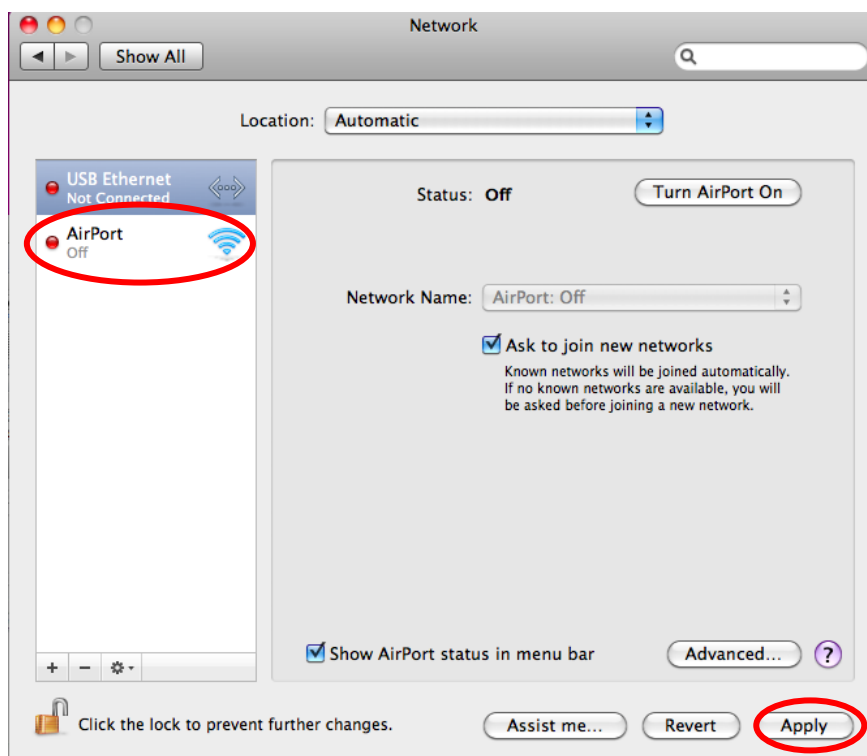


Fig. 5-1-5. Screen after Registering AirPort

- (f) To confirm that AirPort has been registered, perform step (a) again. If Turn AirPort On is displayed, the operation is complete (Fig. 5-1-6).

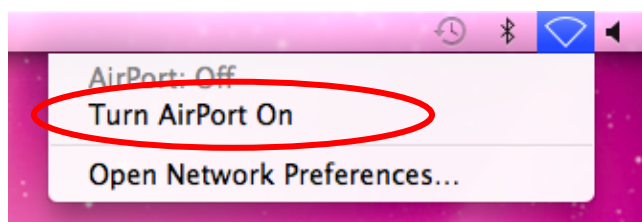


Fig. 5-1-6. Confirming AirPort Registration

5.2. Connecting to an Access Point

- (a) Click on the wireless LAN icon displayed at the upper right of the desktop. On the pull-down menu that appears, select Turn AirPort On (Fig. 5-2-1).

* Connection can also be made by selecting Open Network Preferences (Fig. 5-2-2).

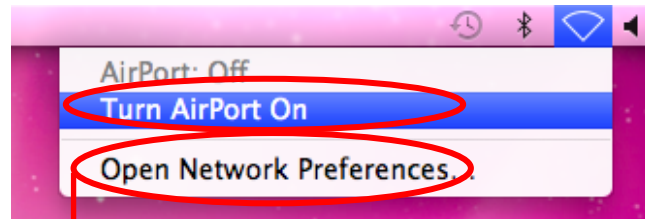


Fig. 5-2-1. Select Turn AirPort On

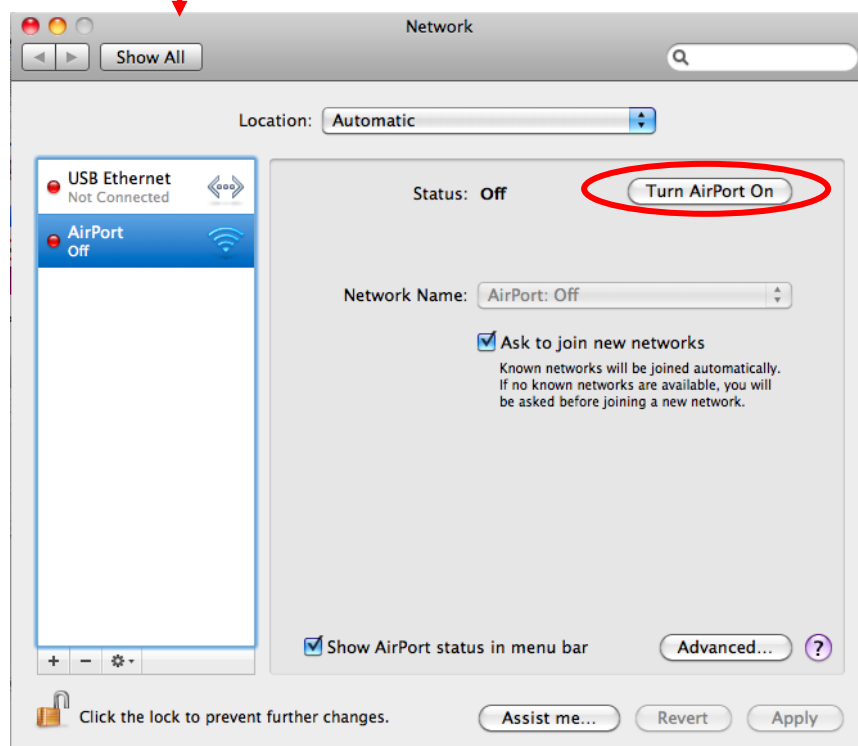


Fig. 5-2-2. Select Turn Airport On from the Network Window

- (b) Confirm that the wireless LAN icon at the upper right of the desktop is in online status (Fig. 5-2-3).

* Note that a connection to a wireless LAN is not yet established at this stage.



Fig. 5-2-3. Wireless LAN Icon Status

- (c) A list of available wireless connections will be displayed. Select MIND-wireless-ap-bg* (Fig. 5-2-4).

* Select MIND-wireless-ap-n if connecting by 11n protocol.

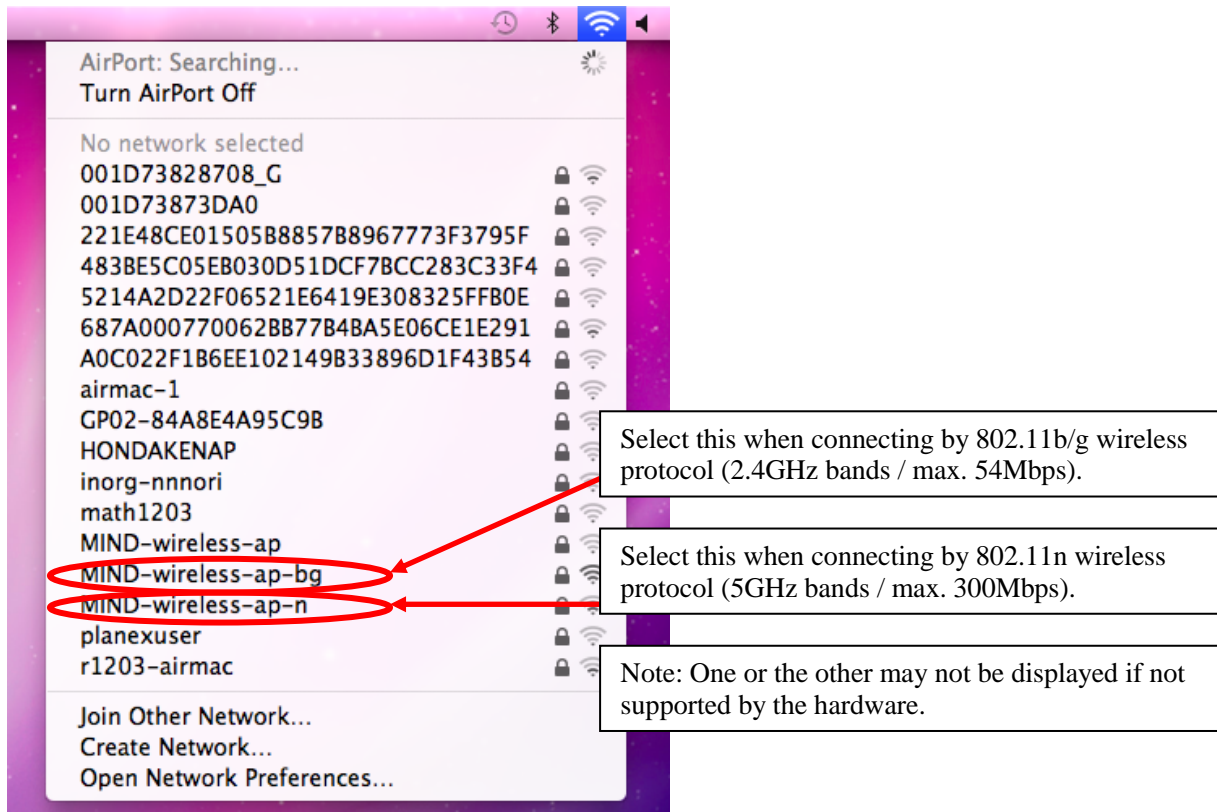


Fig. 5-2-4. List of Available Wireless Connections

- (d) Select the Wireless LAN protocol for making connection (Fig. 5-2-5).

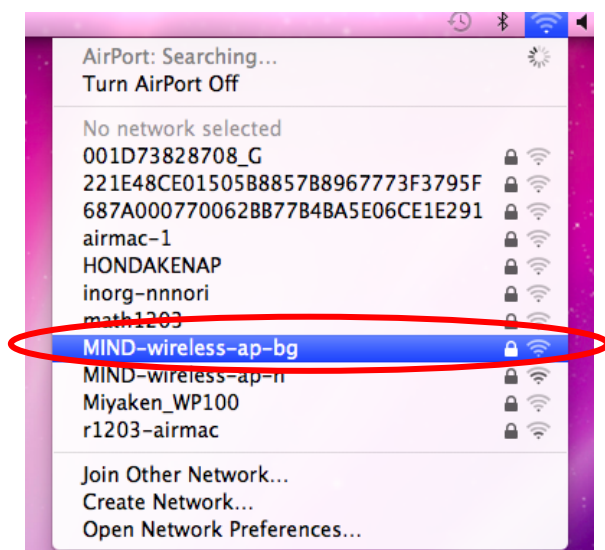


Fig. 5-2-5. Selecting MIND-wireless-ap-bg

- (e) Enter the network security key (cipher key). The key can be found by accessing <http://www.meiji.ac.jp/mind/wireless/local> (see p. 6). Be sure to obtain it ahead of time. Click OK to finish (Fig. 5-2-6).

*To avoid having to enter the WPA password each time, check Remember this network.

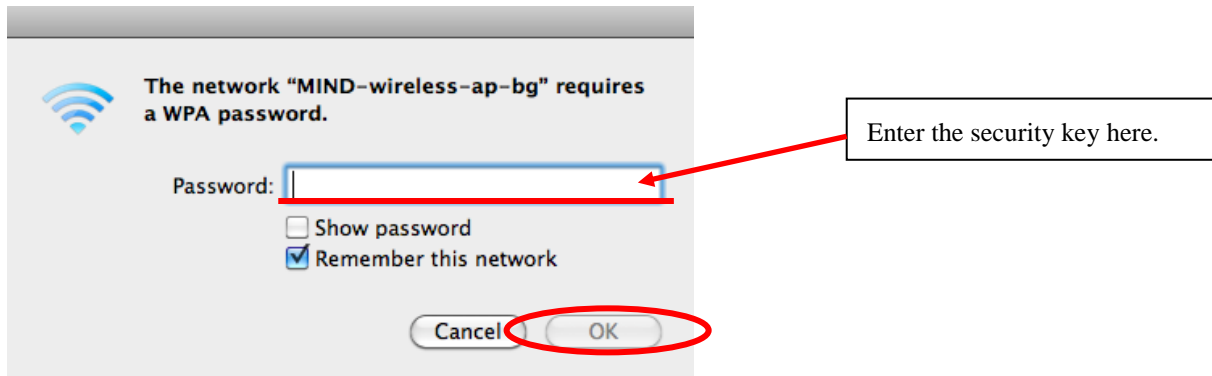


Fig. 5-2-6. Entering Network Security Key

- (f) When the connection to MIND-wireless-ap-bg is completed, the list of wireless connections shows MIND-wireless-ap-bg in connected state (has a check mark by it) (Figs. 5-2-7 and 5-2-8).



Fig. 5-2-7. Confirming Wireless Connection Status

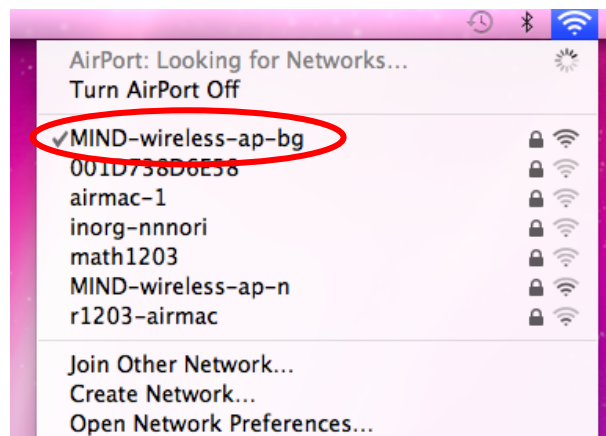


Fig. 5-2-8. Confirming Connected Status of MIND-wireless-ap-bg

5.3. TCP/IP Setup

- (a) From the Apple Menu (open by clicking the Apple mark at the top right of the desktop), select System Preferences (Fig. 5-3-1).

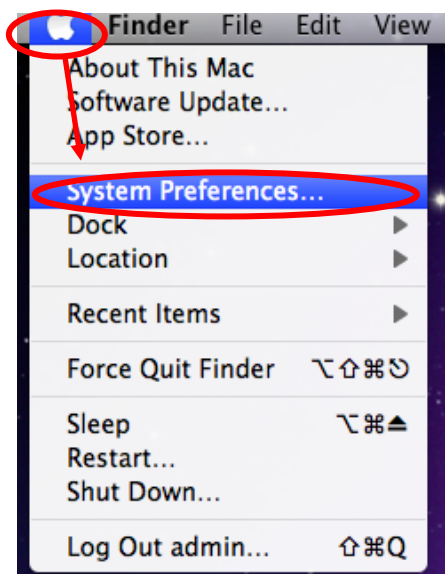


Fig. 5-3-1. Select System Preferences

- (b) Select the Network icon in System Preferences (Fig. 5-3-2).



Fig. 5-3-2. Select Network

- (c) In the Network window, select AirPort and then click Advanced (Fig. 5-3-3).

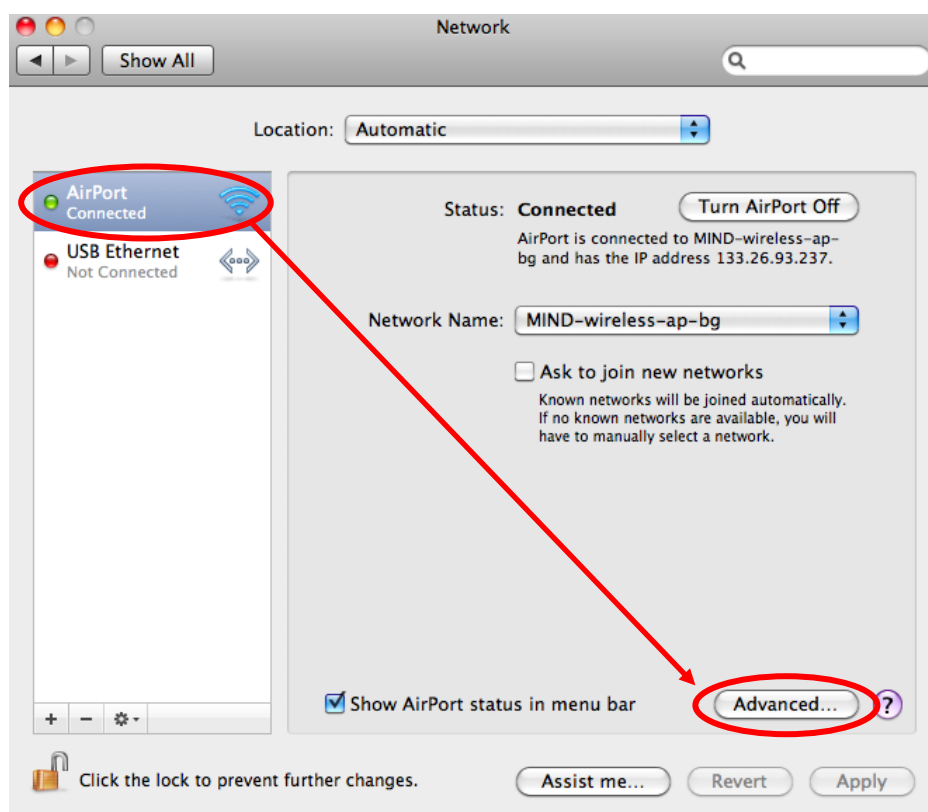


Fig. 5-3-3. Click Advanced in the Network Window

- (d) In the advanced settings window for AirPort, open the TCP/IP tab (Fig. 5-3-4).

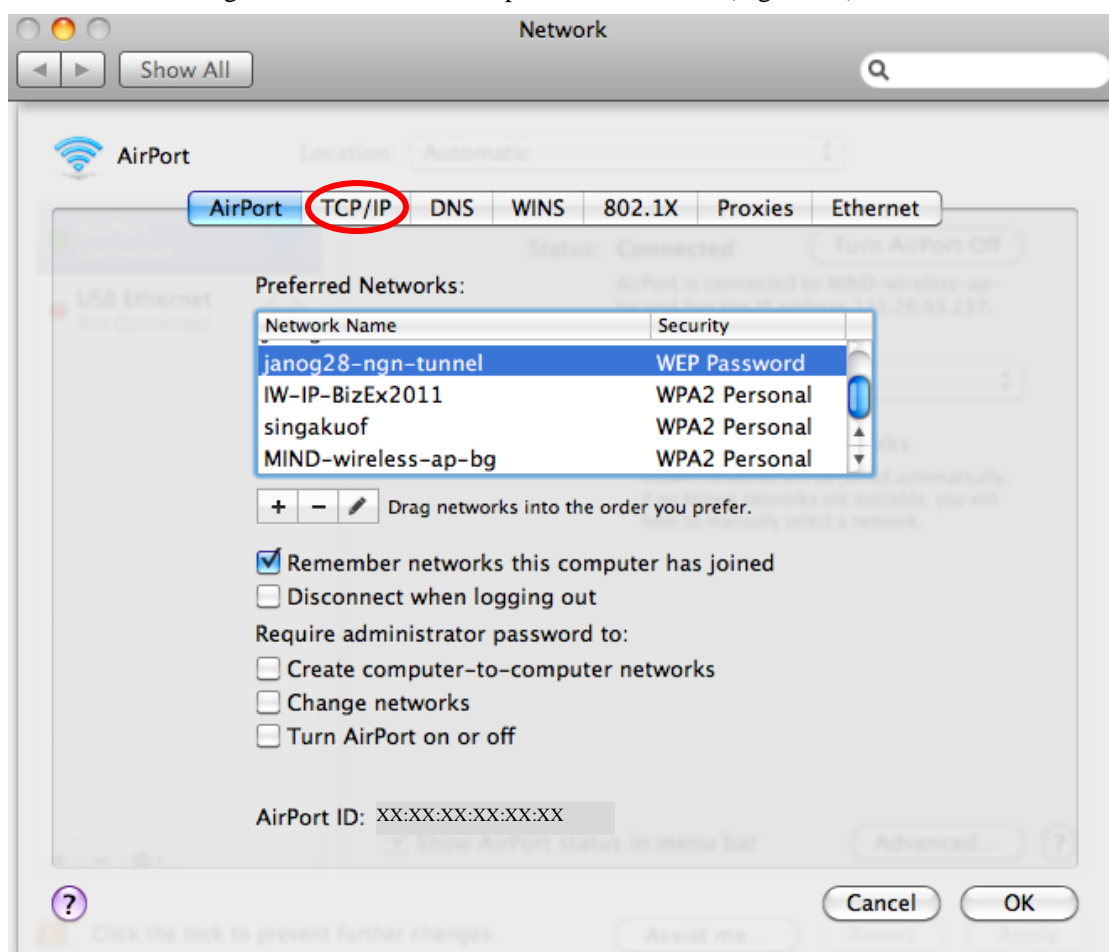


Fig. 5-3-4. Open the TCP/IP Tab in the AirPort Advanced Settings Window

- (e) The TCP/IP information for AirPort should be set to "Using DHCP" and with an IPv4 address value of "133.26.XXX.XXX" ("XXX" are numbers). Click OK and proceed to [6. Web Browser Settings](#) (Fig. 5-3-5).

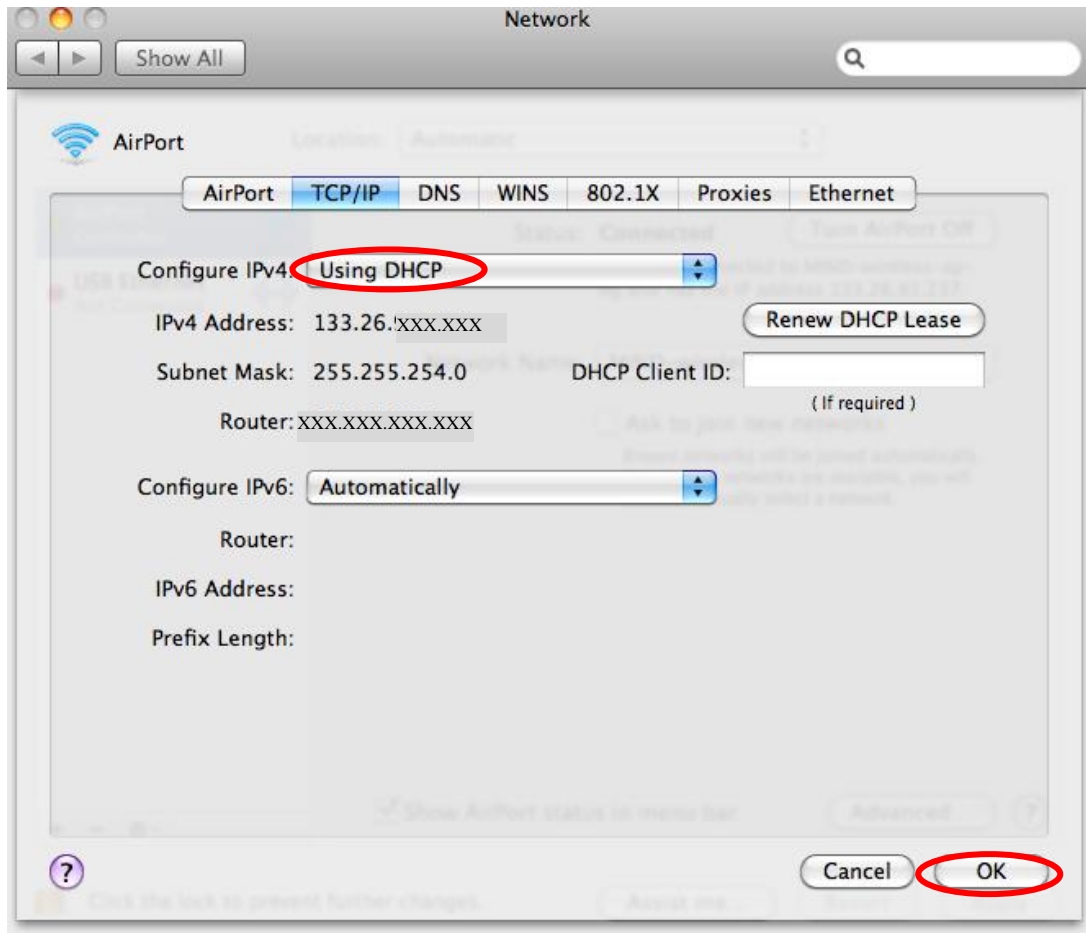


Fig. 5-3-5. TCP/IP Advanced Settings Window

6. Web Browser Settings

6.1. Safari 5.x

- (a) Launch Safari and select Preferences from the Safari pull-down menu (Fig. 6-1-1).

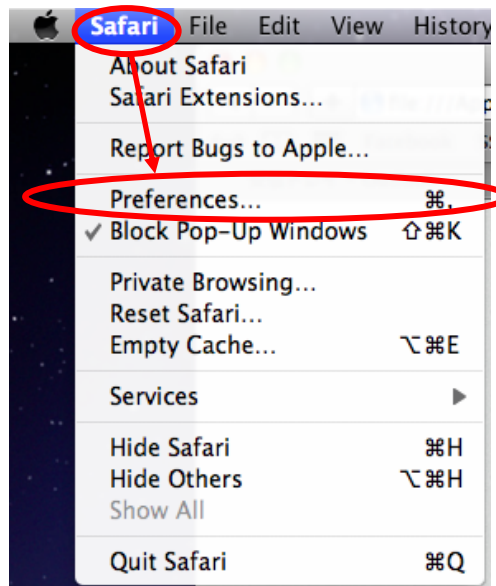


Fig. 6-1-1. Select Safari Preferences

- (b) In the General tab of the Preferences window, enter **<http://www.meiji.ac.jp/>** as the home page (Fig. 6-1-2).

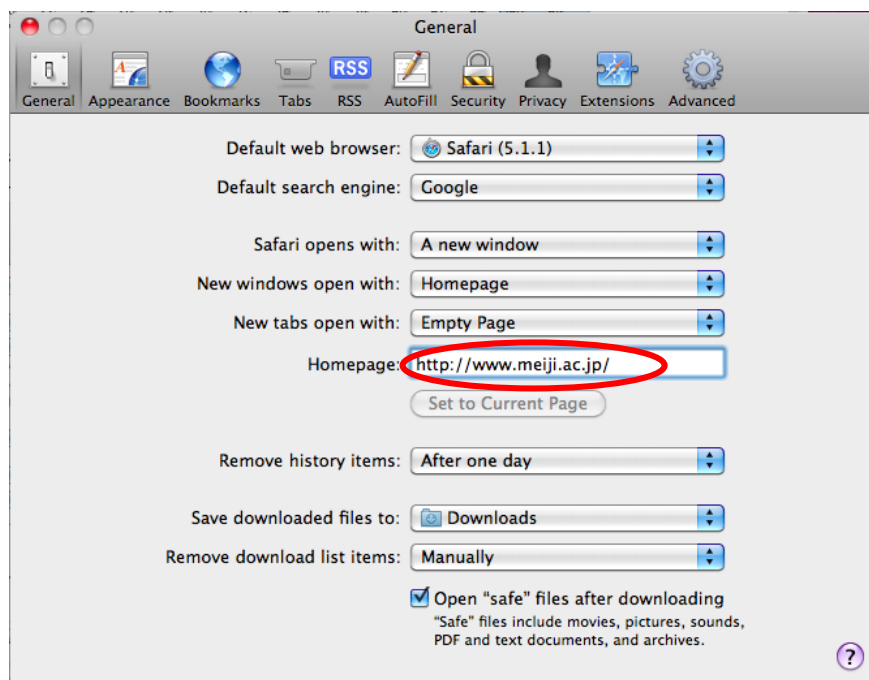


Fig. 6-1-2. General Preferences Window (Safari)

- (c) Next open the Advanced tab and click the Change Settings button in the Proxies section (Fig. 6-1-3).

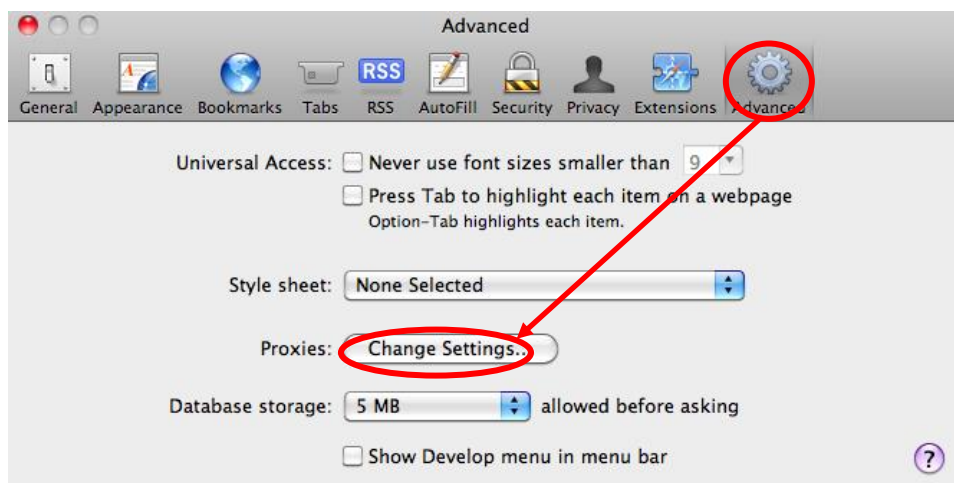


Fig. 6-1-3. Advanced Preferences Window (Safari)

- (d) Under "Select a protocol to configure" Uncheck all items, make sure that the proxy server has not been set, and click OK (Fig. 6-1-4).

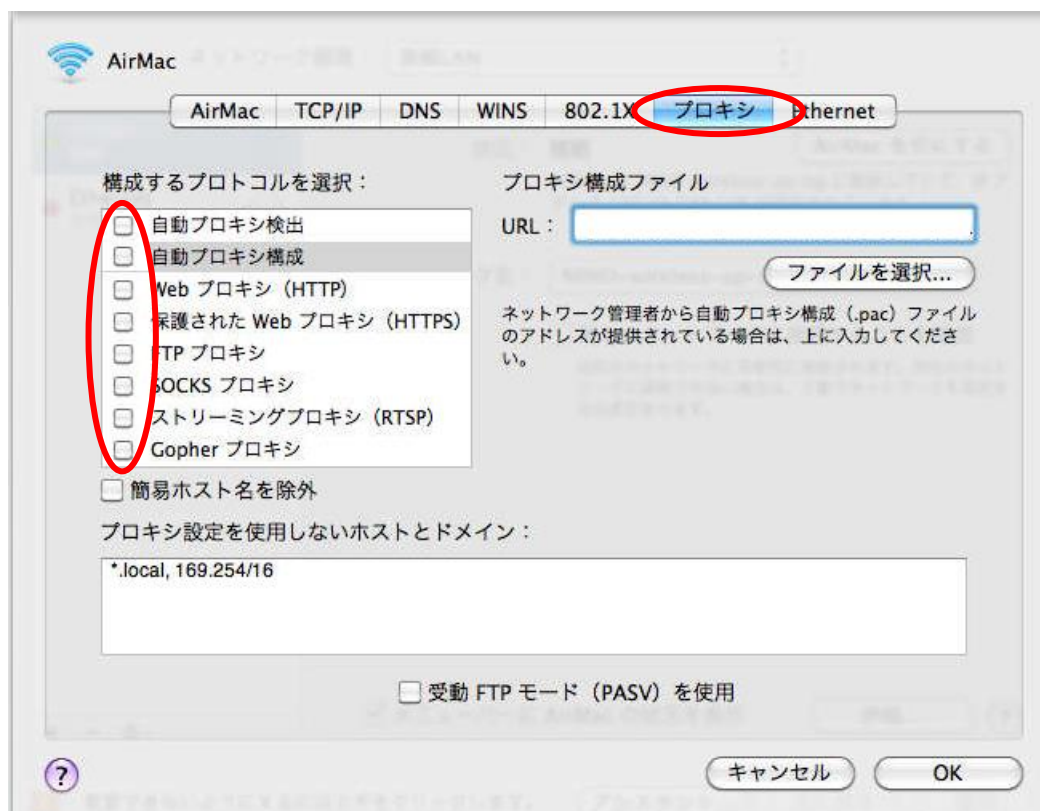


Fig. 6-1-4. Proxies Setting Window (Safari)

- (e) That completes the Safari 5.x setup. Close the window used for step (c).

6.2. Mozilla Firefox 8.x

- (a) Launch Firefox and select Preferences from the Firefox pull-down menu (Fig. 6-2-1).



Fig. 6-2-1. Select Preferences (Firefox)

- (b) Open the General tab in the Preferences window and enter **<http://www.meiji.ac.jp/>** for Home Page in the Startup section (Fig. 6-2-2).

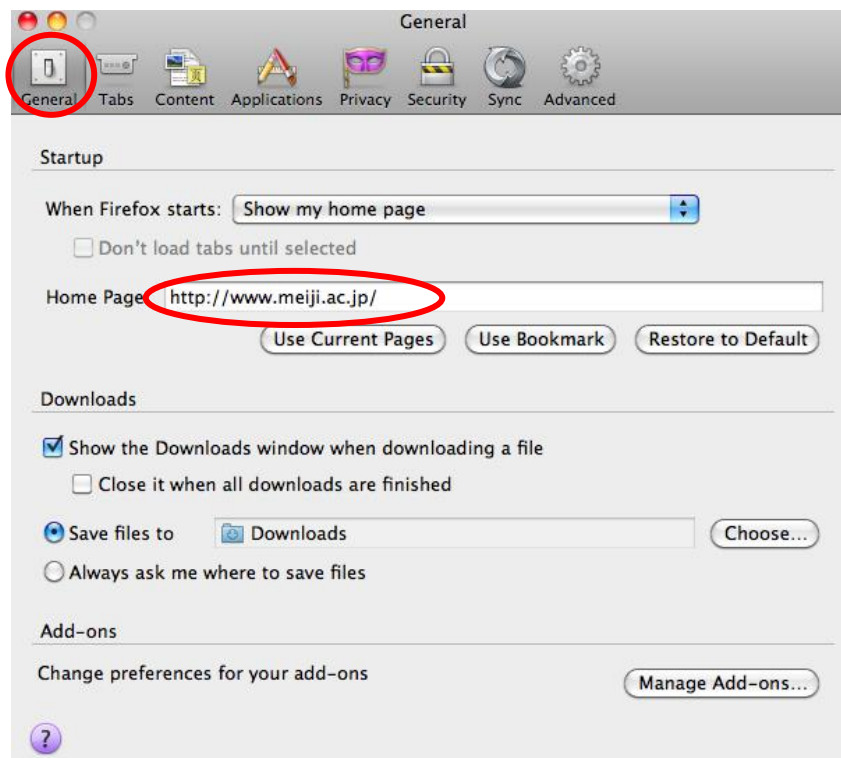


Fig. 6-2-2. General Preferences Window (Firefox)

- (c) Now click Advanced, open the Network tab, and in the Connection section click Settings (Fig. 6-2-3).

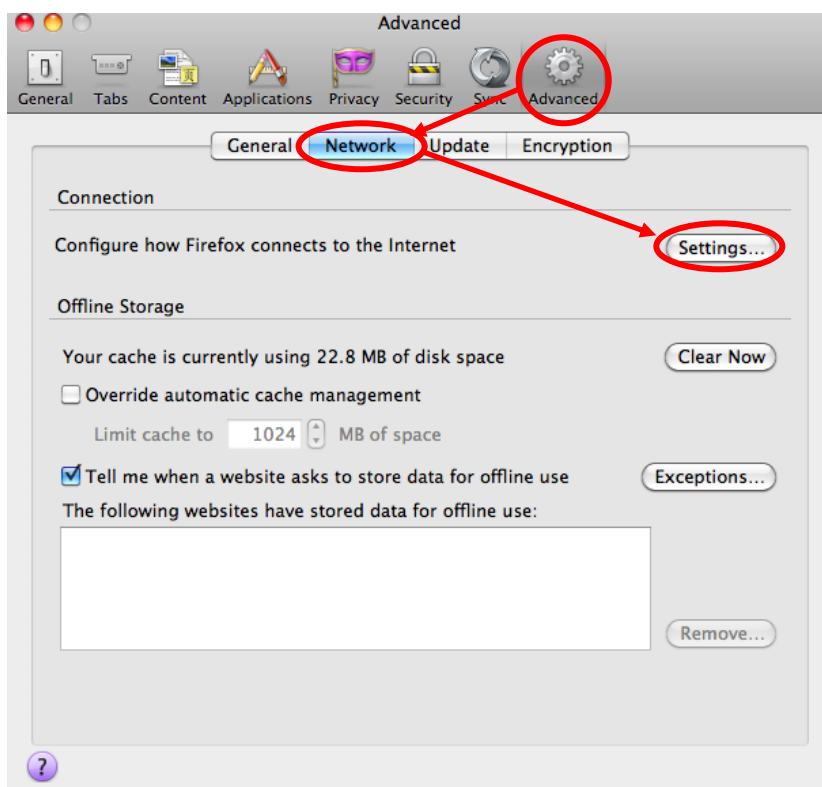


Fig. 6-2-3. Advanced Preferences Window (Firefox)

- (d) The Configure Proxies to Access the Internet page appears. Check No proxy (Fig. 6-2-4).

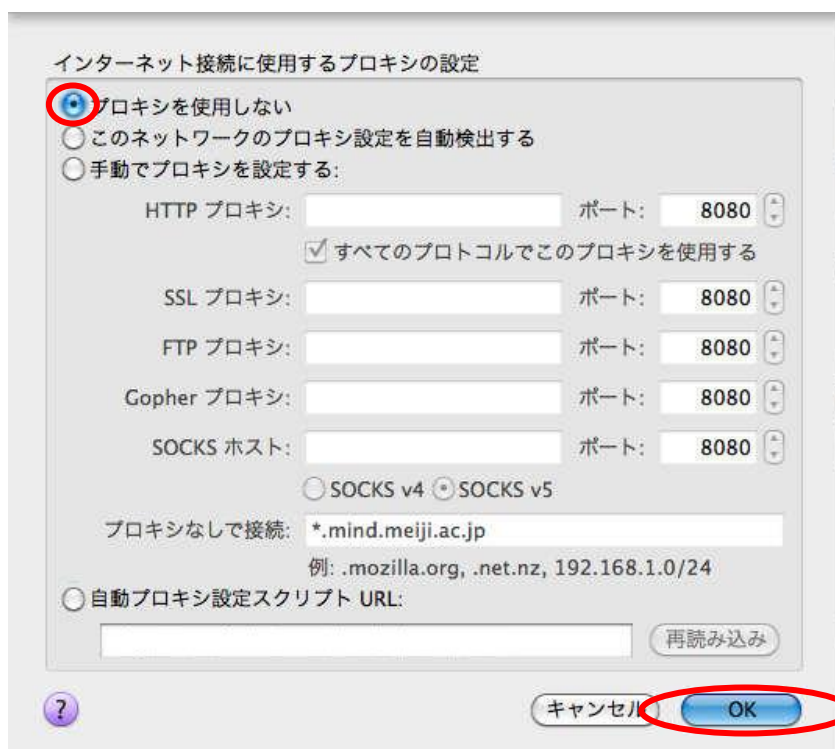


Fig. 6-2-4. Proxy Configuration Window (Firefox)

- (e) That completes the settings for Mozilla Firefox 8.x. Click OK in the window used for step (d) to close the window.

7. Viewing Websites

Now try viewing the Meiji University website.

7.1. Surugadai campus (except Global Front), Ikuta campus, Izumi campus

- (a) Launch your web browser.
- (b) Upon launching, the Common Authentication System Account login window appears.

*** In some cases the login window is not displayed. Reload a few times until it appears.**

- Safari 5.x (Fig. 7-1-1)

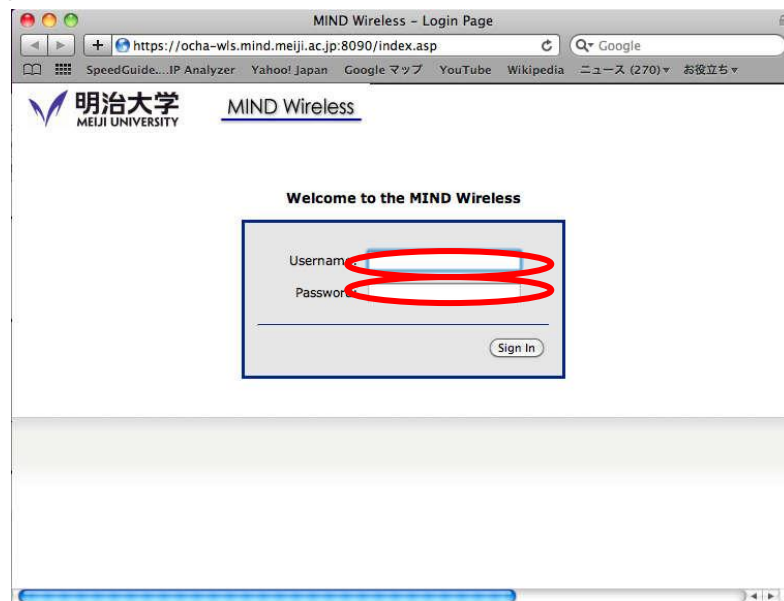


Fig. 7-1-1. Safari 5.x Login Window

- Mozilla Firefox 8.x (Fig. 7-1-2)



Fig. 7-1-2. Mozilla Firefox 8.x Login Window

- (c) In this window, enter your login name and password for the Common Authentication System Account (or for those not having one, your MIND Mobile Account) and click the Sign In button.

- (d) The Meiji University MIND Wireless page loads (Fig. 7-1-3).



Fig. 7-1-3. MIND Wireless Top Page

- (e) Confirm that you can access off-campus sites, such as those in your bookmarks list. If you run into problems, try the suggestions at [8. Troubleshooting](#).

7.2. Surugadai campus (Global Front), Nakano campus

- (a) Launch your web browser.
- (b) Upon launching, the Common Authentication System Account login window appears.

*** In some cases the login window is not displayed. Reload a few times until it appears.**

- Safari 5.x (Fig. 7-2-1)



Fig. 7-2-1. Safari 5.x Login Window

- Mozilla Firefox 8.x (Fig. 7-2-2)



Fig. 7-1-2. Mozilla Firefox 8.x Login Window

- (c) In this window, enter your login name and password for the Common Authentication System Account (or for those not having one, your MIND Mobile Account) and click the Sign In button.
- (d) The Meiji University top page loads (Fig. 7-2-3).

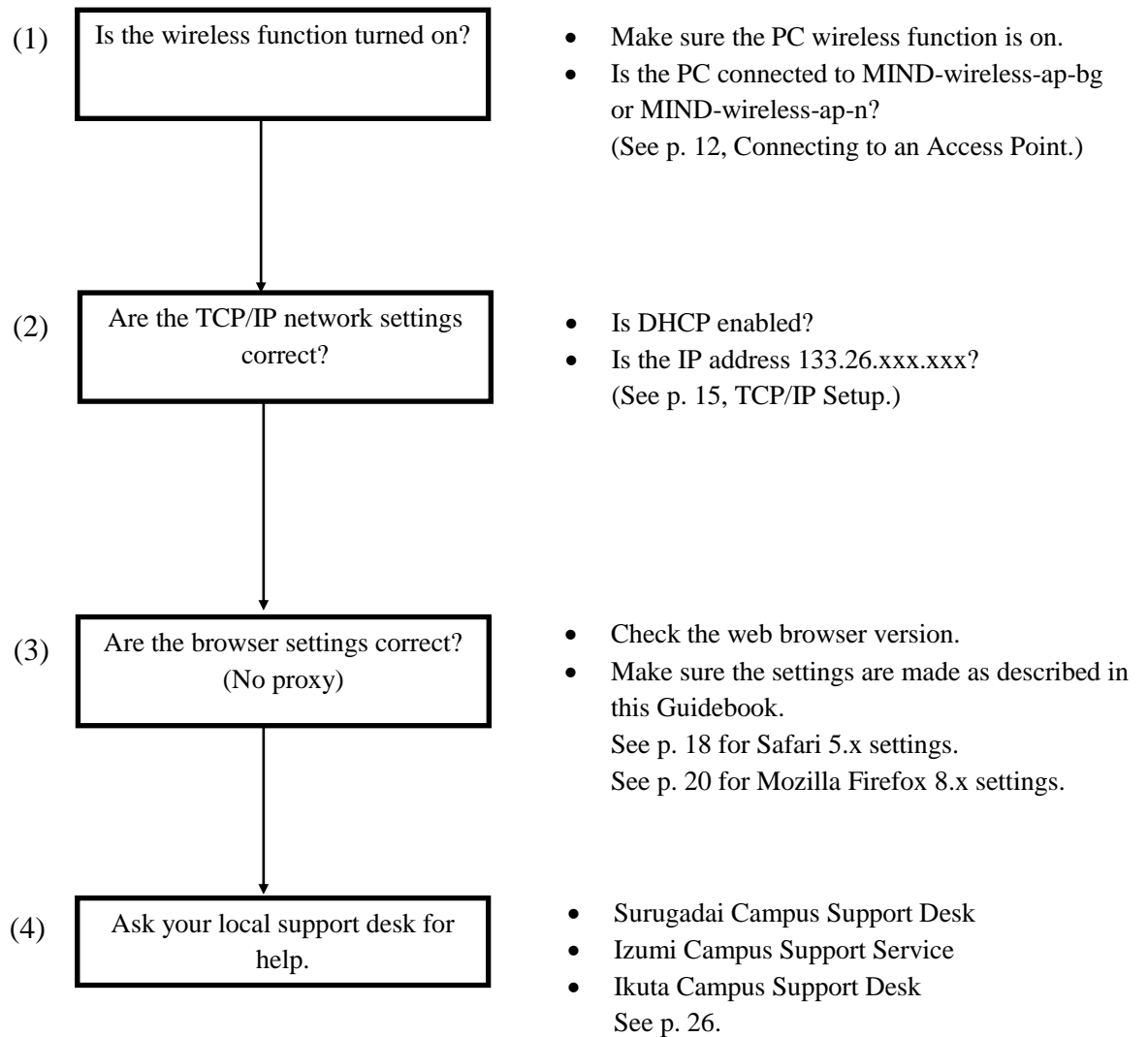


Fig. 7-2-3. Meiji University Top Page

- (e) Confirm that you can access off-campus sites, such as those in your Favorites list.
If you run into problems, try the suggestions at [8. Troubleshooting](#).

8. Troubleshooting

The measures suggested to the right of each item assume Mac OS X as the PC OS.



9. Where to Inquire about Network Connections and Trouble

Surugadai Campus:

Surugadai Campus Support Desk

Location: 7F, Building No. 12

Tel.: 03-3296-4286 (Ext.: 4286)

Location: 7F, Liberty Tower

Tel.: 03-3296-2389 (Ext.: 2389)

Media Support Office

Location: 7F, Building No. 12

Tel.: 03-3296-4438 (Ext.: 4438)

Izumi Campus:

Izumi Campus Support Service

Location: 1F, Izumi Media Building

Tel.: 03-5300-1190 (Ext.: 1190)

Izumi Media Support Office

Location: 1F, Izumi Media Building

Tel.: 03-5300-1189 (Ext.: 1189)

Ikuta Campus:

Ikuta Campus Support Desk

Location: 5F, Main Building

Tel.: 044-934-7711 (Ext.: 7711)

Ikuta Media Support Office

Location: 5F, Main Building

Tel.: 044-934-7710 (Ext.: 7710)

Nakano Campus:

Nakano Campus Support Desk

Location: 5F, Low-Rise Wing

Tel.: 03-5343-8072 (Ext.: 8072)

Nakano Campus Office

Location: 3F, Low-Rise Wing

Tel.: 03-5343-8012 (Ext.: 8012)

10. Reference URLs

Meiji University website	http://www.meiji.ac.jp/
MIND website	http://www.meiji.ac.jp/mind/
IT Systems & Infrastructure Headquarters	http://www.meiji.ac.jp/isc/
Support Desk, Reception Desk	http://www.meiji.ac.jp/mind/support/office.html
MIND Mobile Account user application	http://mobile.mind.meiji.ac.jp/