

Models of *in vitro* collective cell migration

時間：4月22日（水） 14:40-

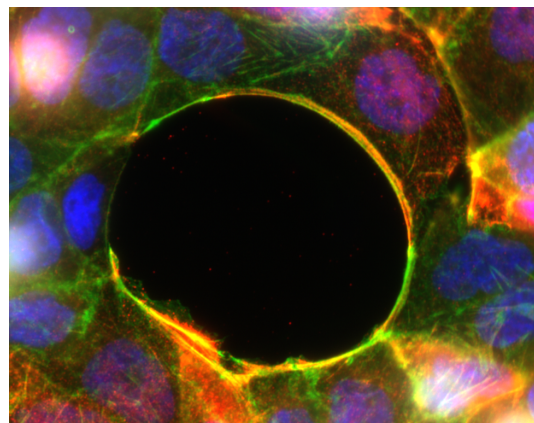
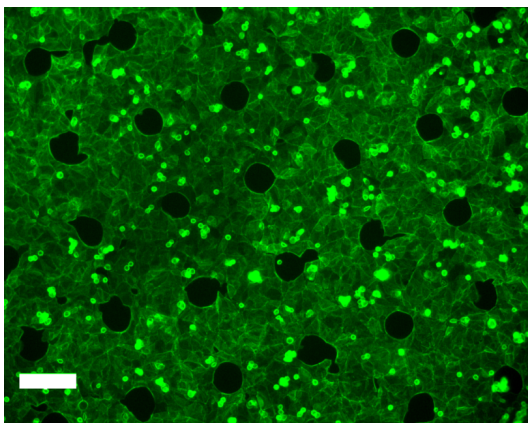
場所：明治大学生田キャンパス A棟 A302

講師：Philippe Marcq

(Université Pierre et Marie Curie and Institut Curie, Paris, France)

Cohesive cells bordered by an empty space migrate collectively and fill the void. Biophysical modeling of *in vitro* experiments allows to identify the force generation mechanisms responsible for the collective migration of cell monolayers in simple geometries.

We find that the epithelization of circular open patches of moderate radius is driven by lamellipodial protrusions assembled by border cells. To model migration assays performed over durations longer than a typical cell cycle, we take into account the interplay between cell division and tissue rheology.



お問い合わせ：石原秀至 shuji@meiji.ac.jp